

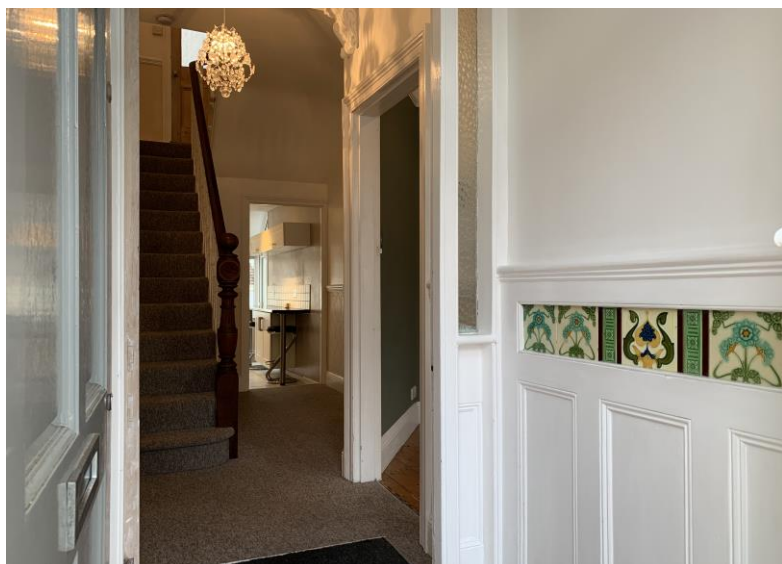


**Falcon**  
lettings

**10 Edgcumbe Park Road**  
Peverell, Plymouth, PL3 4NL

01752 600828

£1,350 pcm



## In Brief

### Edgcombe Park Road, Plymouth - Stunning three Bed Peverell Period House

Two Double bedrooms & One single

Two reception rooms

Spacious and low maintenance garden

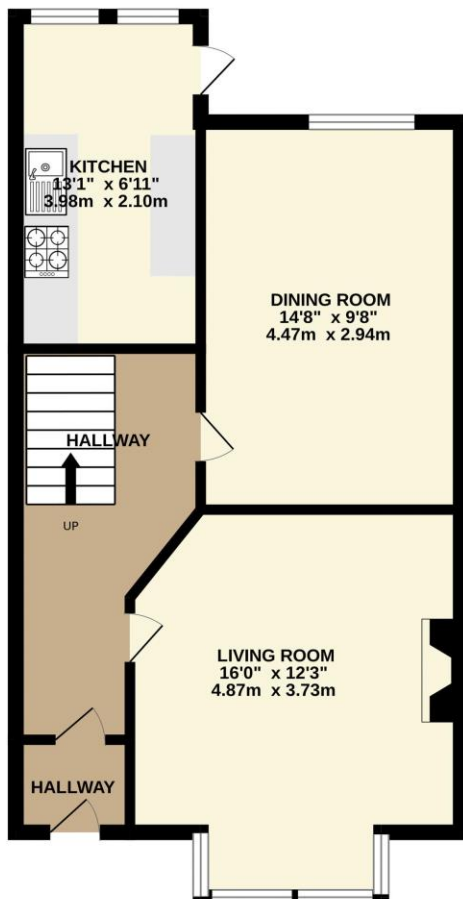
Pets are welcome

Council Tax Band C EPC D

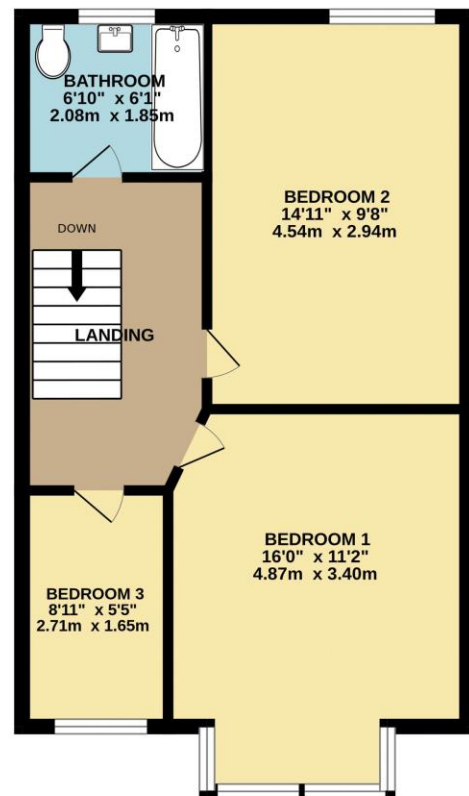
Holding deposit £311 Total Deposit £1,557

Falcon Lettings will be Part Managing this property with the Landlords

GROUND FLOOR  
484 sq.ft. (45.0 sq.m.) approx.



1ST FLOOR  
461 sq.ft. (42.8 sq.m.) approx.



TOTAL FLOOR AREA : 945 sq.ft. (87.8 sq.m.) approx.  
Made with Metropix ©2025

[www.falconlettings.com](http://www.falconlettings.com)

8 Mannamead Road Mutley Plymouth PL4 7AA

Email: [lettings@falconproperty.com](mailto:lettings@falconproperty.com)

