



Falcon

01752 600444

22 Triumphal Crescent

Plympton, Plymouth, PL7 4RW

Guide Price £290,000 - £300,000





In Brief

Stunning tucked away Town House with Parking and gardens

Reception Rooms	Fabulous Open plan living room and Kitchen - diner	Parking	driveway and garage
Bedrooms	3 double bedrooms with one en- suite	Council Tax	C
Heating	Gas central heating		
Area	1192 Sq Ft		
Tenure	Freehold		

Description

Situated in a tucked-away cul-de-sac within the highly sought-after area of Woodford, this beautifully presented townhouse offers spacious and versatile accommodation, along with the added benefits of a driveway, garage, and private rear garden. Ideally located close to Plymbridge Woods, well-regarded local schools, and a range of everyday amenities, the property is perfectly suited to families and professionals alike. Internally, the home is presented in immaculate condition throughout and is ready for its next owners to move straight into. The accommodation comprises three generous double bedrooms, including a principal bedroom with en-suite shower room, alongside a modern family bathroom. Further benefits include double glazing and gas central heating. To the rear, the property enjoys a wonderful enclosed private garden, providing an ideal space for relaxing and entertaining. A viewing is highly recommended to fully appreciate the space, presentation, and location on offer.

Need A Mortgage?

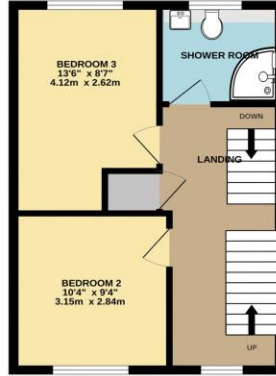
Don't pay more than you need to for your mortgage advice:
ours is only £195 paid when you move!

Floor Plans

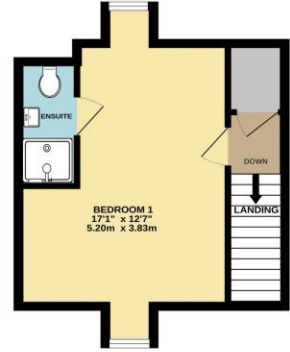
GROUND FLOOR



1ST FLOOR



2ND FLOOR



Made with Metropix ©2026



Fixed Price Conveyancing

A complete solution from just £600 with No sale – No Fee



We have not tested any apparatus, equipment, fixtures and fittings or services and so cannot verify that they are connected, in working order or fit for the purpose. Neither have we had sight of the legal documents to verify the Freehold or Leasehold status of any property; or sight of any consents, including Planning Permissions, building Regulations and Breaches of Covenants that may be required for alterations to the property. A buyer is advised to obtain verification from their Solicitor and/or Surveyor. Items shown in photographs are NOT included unless specifically mentioned within the Sales Particulars. Any floor plans on these details are not drawn to scale and are intended for guidance only

Falcon Property is an Introducer to Bradleys Financial Management Ltd. They are appointed representatives of Sesame Ltd who are authorised and regulated by the Financial Services Authority. Bradleys do not charge for mortgage advice, however a fee paying option is available. Typical fee is £195. Bradleys Financial Management: 16 Mannamead Road, Mutley, Plymouth, PL4 7AA

Your home may be repossessed if you do not keep up repayments on your mortgage.

