



Falcon
lettings

01752 600828

6 Cramber Close

Roborough, Plymouth, PL6 7AZ

£1,200 pcm



In Brief

Three bedroom house, Cramber Close Roborough

Living Room, Conservatory & Kitchen/Diner

Three Bedrooms, Two Double Bedrooms

Gas Central Heating

On Street Parking

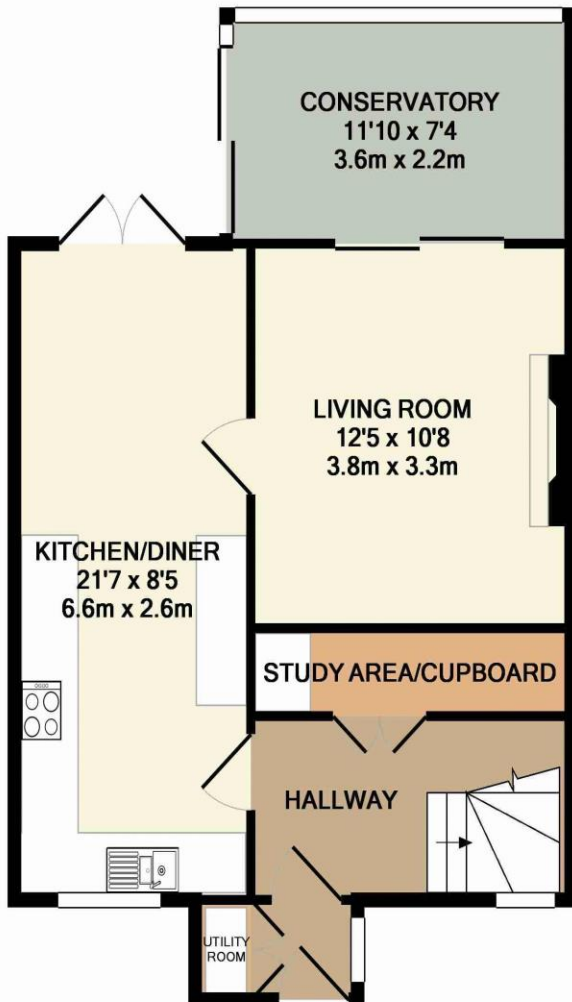
Open Plan Kitchen/Dining Room

Holding Deposit £276 Total deposit £1,384

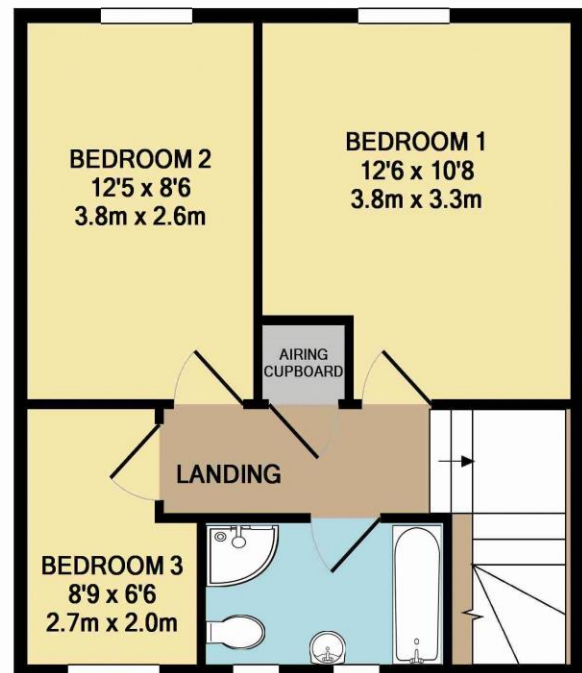
EPC Rating - C, Council Tax Band - B

This property is Fully Managed by Falcon Lettings

New carpets and painting to be done before the new tenancy.



GROUND FLOOR
APPROX. FLOOR
AREA 544 SQ.FT.
(50.5 SQ.M.)



1ST FLOOR
APPROX. FLOOR
AREA 431 SQ.FT.
(40.1 SQ.M.)

TOTAL APPROX. FLOOR AREA 975 SQ.FT. (90.6 SQ.M.)

Made with Metropix ©2016

www.falconlettings.com

8 Mannamead Road Mutley Plymouth PL4 7AA

Email: lettings@falconproperty.com

