



Falcon

01752 600444

55 Priory Road

Lower Compton, Plymouth, PL3 5EP

Guide Price £250,000 - £260,000





In Brief

Split-level living in heart of sought-after Lower Compton with garage

Sunny living room with kitchen / diner

Good sized bedrooms

Heating	Gas central heating
Area	969 sq ft
Tenure	Freehold

Parking	Drive and garage
Council Tax	B

Description

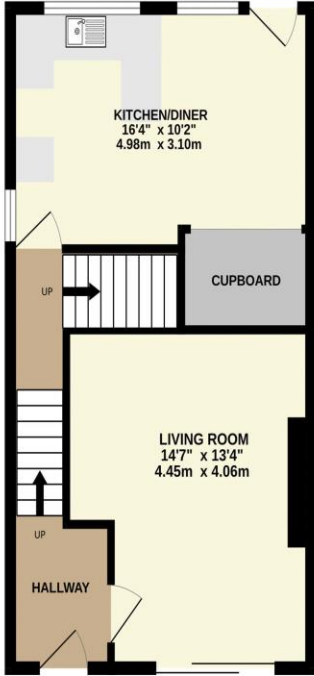
Located in the highly sought-after area of Lower Compton, this beautifully designed 1960s home offers a unique split-level layout and a wonderful village-style atmosphere, with excellent primary schools close by. Arranged over three half levels, the property is full of natural light and character. The welcoming entrance hallway leads into a bright and sunny living room with sliding doors opening onto a charming front sun terrace. A few steps up is the spacious kitchen/diner, fitted with a stylish modern range of units, breakfast bar and direct access to the rear garden. The first half landing offers two generous bedrooms and a contemporary family bathroom with a modern suite and mixer shower over the bath. Occupying the top level, the impressive principal bedroom is a fantastic size and features double doors opening to a Juliet balcony overlooking the rear garden. Further benefits include gas central heating and uPVC double glazing. Outside, the rear garden is a real highlight, with a patio leading to an elevated lawn and chipped seating area enjoying excellent privacy, enclosed by timber fencing and attractive original stone walling. To the front, a driveway leads to a garage located in the small block immediately in front of the house. A truly wonderful home with a distinctive and welcoming feel throughout.

Need A Mortgage?

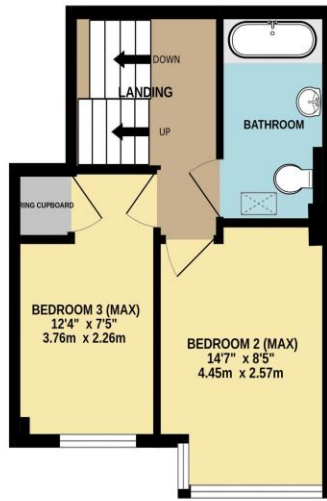
Don't pay more than you need to for your mortgage advice:
ours is only £195 paid when you move!

Floor Plans

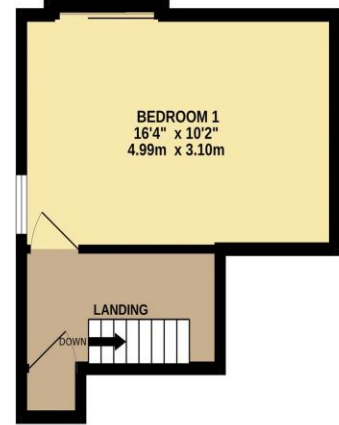
GROUND FLOOR
443 sq.ft. (41.2 sq.m.) approx.



1ST FLOOR
297 sq.ft. (27.6 sq.m.) approx.



2ND FLOOR
229 sq.ft. (21.3 sq.m.) approx.



TOTAL FLOOR AREA : 969 sq.ft. (90.0 sq.m.) approx.
Made with Metropix ©2026



Fixed Price Conveyancing

A complete solution from just £600 with No sale – No Fee



We have not tested any apparatus, equipment, fixtures and fittings or services and so cannot verify that they are connected, in working order or fit for the purpose. Neither have we had sight of the legal documents to verify the Freehold or Leasehold status of any property; or sight of any consents, including Planning Permissions, building Regulations and Breaches of Covenants that may be required for alterations to the property. A buyer is advised to obtain verification from their Solicitor and/or Surveyor. Items shown in photographs are NOT included unless specifically mentioned within the Sales Particulars. Any floor plans on these details are not drawn to scale and are intended for guidance only

Falcon Property is an Introducer to Bradleys Financial Management Ltd. They are appointed representatives of Sesame Ltd who are authorised and regulated by the Financial Services Authority. Bradleys do not charge for mortgage advice, however a fee paying option is available. Typical fee is £195. Bradleys Financial Management: 16 Mannamead Road, Mutley, Plymouth, PL4 7AA

Your home may be repossessed if you do not keep up repayments on your mortgage.

