



Falcon

01752 600444

1 Arlington Road

Plymouth, PL4 7ER

Guide Price £275,000 - £300,000





In Brief

Spacious & Bright 3-Bed Home with Private Garden and Endless Potential

Reception Rooms Two large reception rooms

Bedrooms Three double bedrooms

Heating Gas central heating

Area 1295 sq ft

Tenure Freehold

Parking On street parking, restrictions may apply.

Council Tax C

Description

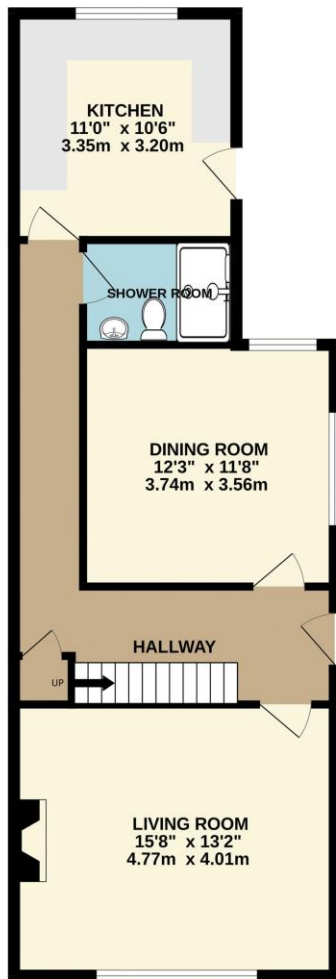
Brilliantly located within easy walking distance of Mutley Plain and its many shops and amenities, this three-bedroom semi-detached family home sits in a small, exclusive cul-de-sac of just six houses. Now in need of some redecoration and modernisation, it offers a superb opportunity to add value and put your own stamp on a well-proportioned home. The ground floor features a generous hallway, a large living room, and a separate dining room—ideal for family life and entertaining. There's a downstairs bathroom with WC and a well-fitted kitchen with direct access to the garden. Upstairs, a light landing leads to three double bedrooms and a modern fitted shower room. Outside, the property enjoys a good-sized garden to the side and rear, with a large side patio and steps up to a lawned area. Bright, sunny, and enjoying a good degree of privacy, it's perfect for relaxing or alfresco dining. Further benefits include the quiet cul-de-sac setting, family-friendly layout, and fantastic scope to update. A rare find in such a central location—early viewing recommended.

Need A Mortgage?

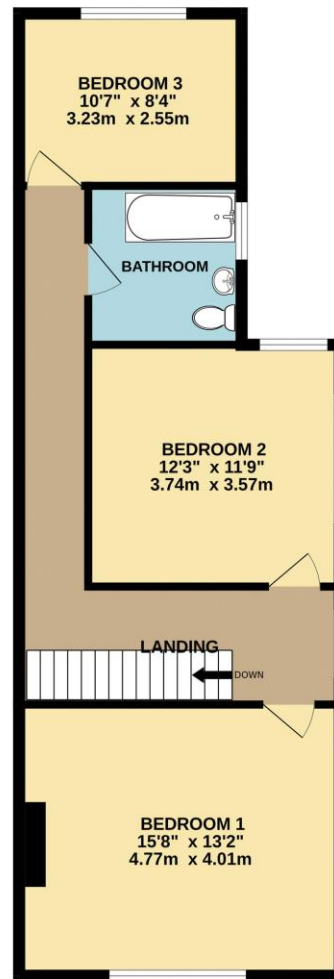
Don't pay more than you need to for your mortgage advice: ours is only £195 paid when you move!

Floor Plans

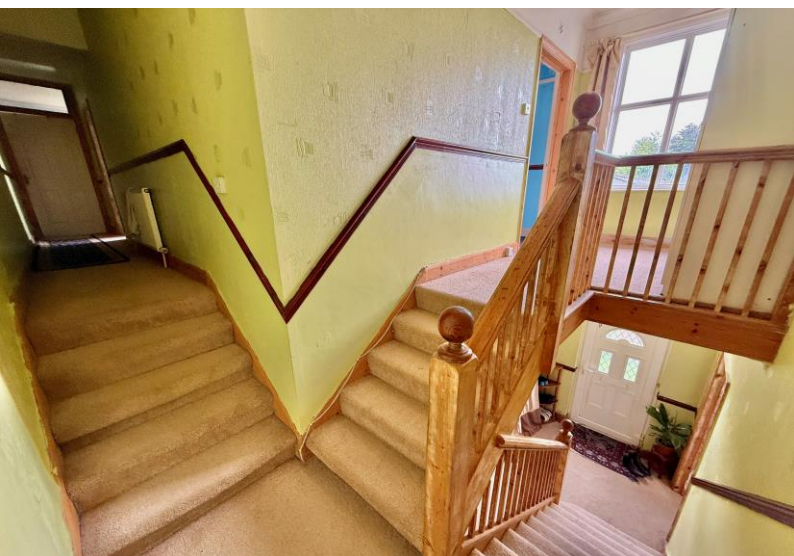
GROUND FLOOR
647 sq.ft. (60.1 sq.m.) approx.



1ST FLOOR
648 sq.ft. (60.2 sq.m.) approx.



TOTAL FLOOR AREA : 1295 sq.ft. (120.4 sq.m.) approx.
Made with Metropix ©2026



Fixed Price Conveyancing

A complete solution from just £600 with No sale – No Fee



We have not tested any apparatus, equipment, fixtures and fittings or services and so cannot verify that they are connected, in working order or fit for the purpose. Neither have we had sight of the legal documents to verify the Freehold or Leasehold status of any property; or sight of any consents, including Planning Permissions, building Regulations and Breaches of Covenants that may be required for alterations to the property. A buyer is advised to obtain verification from their Solicitor and/or Surveyor. Items shown in photographs are NOT included unless specifically mentioned within the Sales Particulars. Any floor plans on these details are not drawn to scale and are intended for guidance only

Falcon Property is an Introducer to Bradleys Financial Management Ltd. They are appointed representatives of Sesame Ltd who are authorised and regulated by the Financial Services Authority. Bradleys do not charge for mortgage advice, however a fee paying option is available. Typical fee is £195. Bradleys Financial Management: 16 Mannamead Road, Mutley, Plymouth, PL4 7AA

Your home may be repossessed if you do not keep up repayments on your mortgage.

