



Falcon

01752 600444

10 Darwin Crescent

Laira, Plymouth, PL3 6DX

Guide Price £240,000 - £250,000





In Brief

Semi - Detached Bungalow with stunning views across the Estuary Chain free

Reception Rooms	2 Bedrooms	Parking	On street parking
Bedrooms	2 Reception rooms	Council Tax	C
Heating	Gas central heating 2 year old boiler		
Area	773 Sq Ft		
Tenure	Freehold		

Description

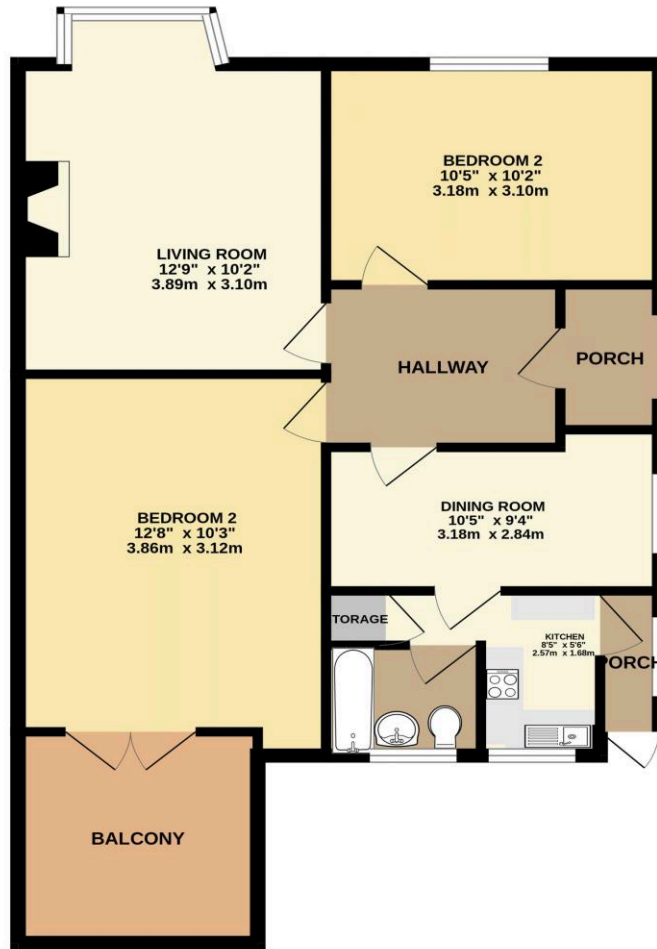
This chain-free semi-detached two-bedroom bungalow enjoys an elevated position with breathtaking panoramic estuary views. Filled with natural light, it offers flexible and well-proportioned accommodation ideal for downsizers, investors, or those looking to personalise a home in a sought-after location. A central hallway leads to a bright living room and separate dining room, perfect for entertaining or home working. The kitchen is functional with scope to update. There are two generous bedrooms, with the main benefiting from a private balcony – a standout feature offering stunning views and a peaceful retreat. Outside, a south-facing garden provides excellent outdoor space, while a substantial cellar offers valuable storage or potential for further use (subject to consents). Conveniently located with easy access to the A38, this is a superb opportunity to secure a home with incredible views and great potential.

Need A Mortgage?

Don't pay more than you need to for your mortgage advice:
ours is only £195 paid when you move!

Floor Plans

GROUND FLOOR
773 sq.ft. (71.8 sq.m.) approx.

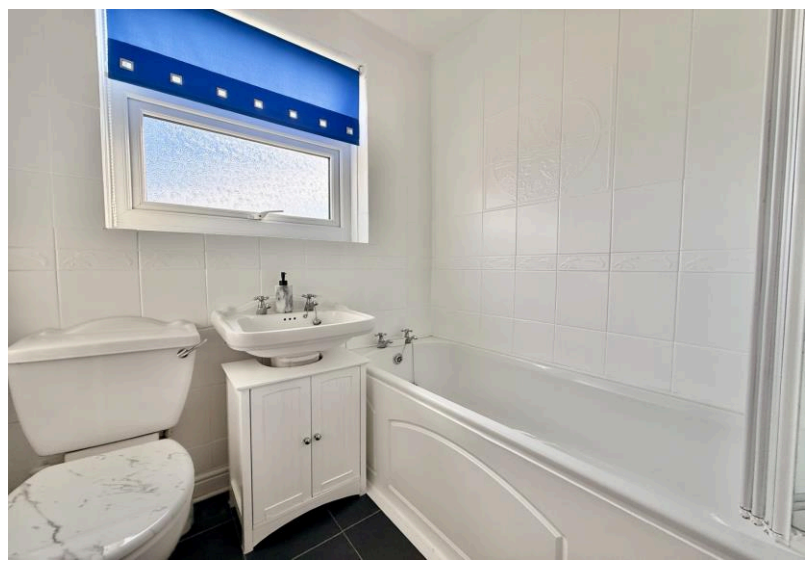


TOTAL FLOOR AREA : 773 sq.ft. (71.8 sq.m.) approx.
Made with MetroPix ©2026



Fixed Price Conveyancing

A complete solution from just £600 with No sale – No Fee



We have not tested any apparatus, equipment, fixtures and fittings or services and so cannot verify that they are connected, in working order or fit for the purpose. Neither have we had sight of the legal documents to verify the Freehold or Leasehold status of any property; or sight of any consents, including Planning Permissions, building Regulations and Breaches of Covenants that may be required for alterations to the property. A buyer is advised to obtain verification from their Solicitor and/or Surveyor. Items shown in photographs are NOT included unless specifically mentioned within the Sales Particulars. Any floor plans on these details are not drawn to scale and are intended for guidance only

Falcon Property is an Introducer to Bradleys Financial Management Ltd. They are appointed representatives of Sesame Ltd who are authorised and regulated by the Financial Services Authority. Bradleys do not charge for mortgage advice, however a fee paying option is available. Typical fee is £195. Bradleys Financial Management: 16 Mannamead Road, Mutley, Plymouth, PL4 7AA

Your home may be repossessed if you do not keep up repayments on your mortgage.

