



Falcon

01752 600444

15 Langdale Gardens

Estover, Plymouth, PL6 8SN

Guide Price £220,000 - £230,000





In Brief

End terraced three bedroom large south facing garden

Reception Rooms Living room Kitchen- Diner

Bedrooms 3 Bedrooms

Heating Gas central heating

Tenure Freehold

Parking On Street

Council Tax B

Description

A fantastic opportunity to acquire this three-bedroom end-terrace home in Estover, set on an enviable plot with a larger-than-average south-facing rear garden. Offered to the market chain-free, this much-loved property has been in the same family for over 50 years and is now ready for its next chapter. The accommodation to the ground floor comprises a spacious kitchen/diner, a comfortable living room, a bright conservatory overlooking the garden, and the added convenience of a downstairs WC. To the first floor are three well-proportioned bedrooms, a family bathroom, and a large storage cupboard.

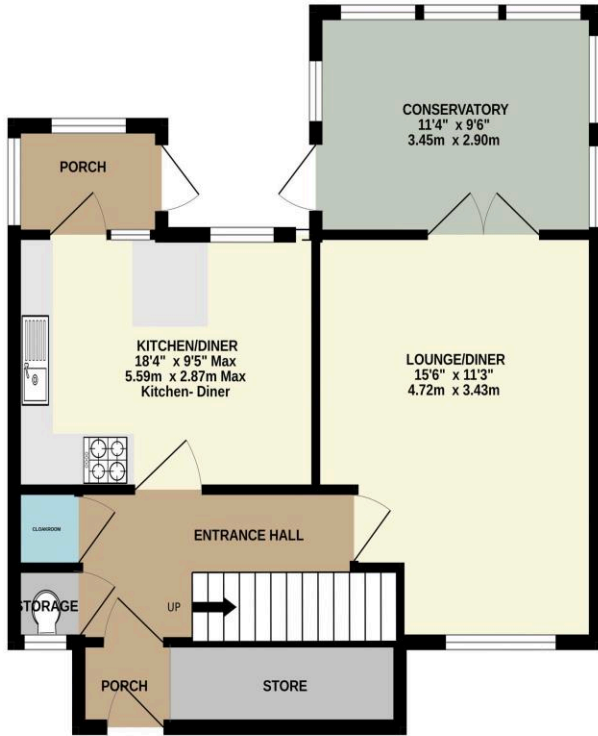
Externally, the standout feature is the generous south-facing garden, offering excellent potential for outdoor entertaining, landscaping, or extension (subject to the necessary consents). Parking is available adjacent to the property on a first-come, first-served basis. While the property would benefit from a degree of modernisation, it presents a superb opportunity for buyers to put their own stamp on a home with great space and potential. Ideally located close to local supermarkets, well-regarded schools, and with easy access to the A38, this property would make a wonderful family home.

Need A Mortgage?

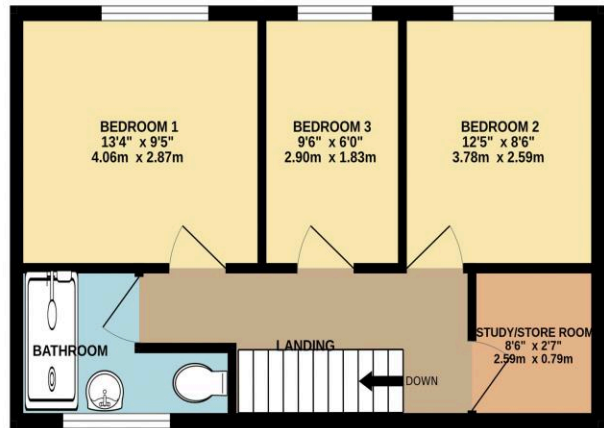
Don't pay more than you need to for your mortgage advice: ours is only £195 paid when you move!

Floor Plans

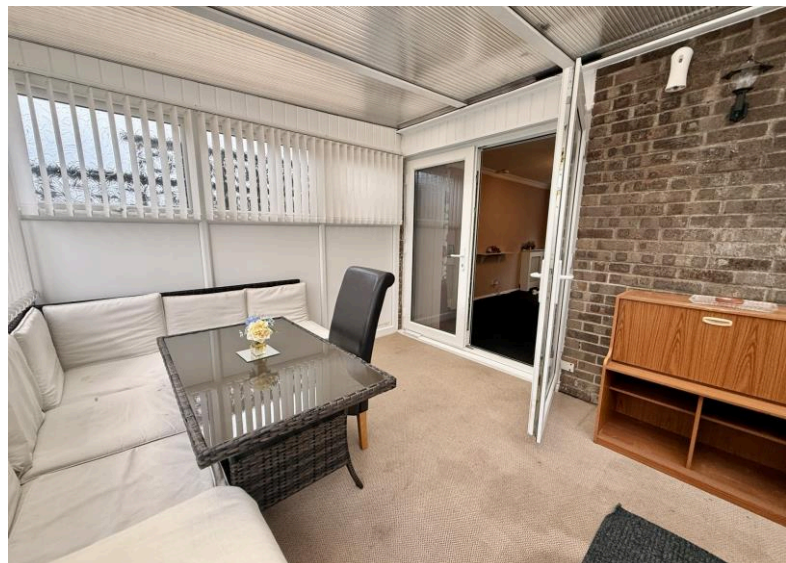
GROUND FLOOR



1ST FLOOR



Made with Metropix ©2026



Fixed Price Conveyancing

A complete solution from just £600 with No sale – No Fee



We have not tested any apparatus, equipment, fixtures and fittings or services and so cannot verify that they are connected, in working order or fit for the purpose. Neither have we had sight of the legal documents to verify the Freehold or Leasehold status of any property; or sight of any consents, including Planning Permissions, building Regulations and Breaches of Covenants that may be required for alterations to the property. A buyer is advised to obtain verification from their Solicitor and/or Surveyor. Items shown in photographs are NOT included unless specifically mentioned within the Sales Particulars. Any floor plans on these details are not drawn to scale and are intended for guidance only

Falcon Property is an Introducer to Bradleys Financial Management Ltd. They are appointed representatives of Sesame Ltd who are authorised and regulated by the Financial Services Authority. Bradleys do not charge for mortgage advice, however a fee paying option is available. Typical fee is £195. Bradleys Financial Management: 16 Mannamead Road, Mutley, Plymouth, PL4 7AA

Your home may be repossessed if you do not keep up repayments on your mortgage.

