



Falcon
lettings

01752 600828

Flat 3, 46

Houndiscombe Road, Plymouth, PL4 6HE

£1,100 pcm



In Brief

Minutes walking distance of the University and City Centre.

Spacious penthouse apartment over two floors

Great main bedroom with vaulted ceiling and second single or study room

Open plan Living Room and kitchen

Bathroom with bath and separate shower

Private roof terrace

Holding deposit £253 Total deposit £1,269

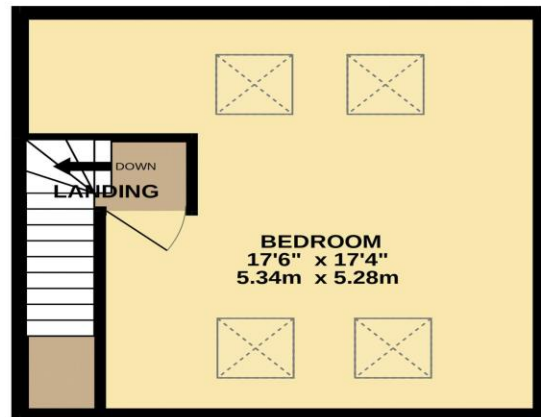
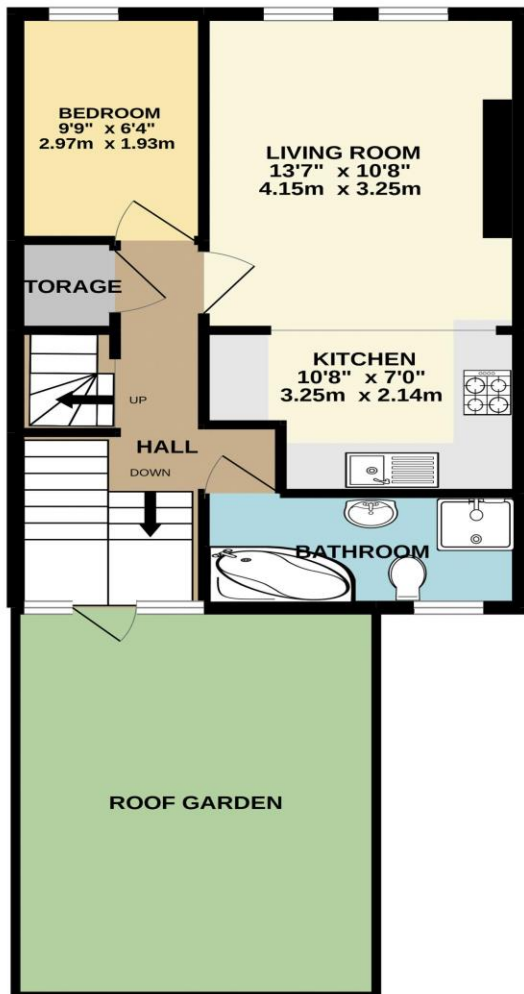
EPC E and Council Tax Band A

No on street parking! Permit £75 Pcm - Napier Terrace

Managed by Falcon Lettings

GROUND FLOOR
428 sq.ft. (39.8 sq.m.) approx.

1ST FLOOR
303 sq.ft. (28.2 sq.m.) approx.



TOTAL FLOOR AREA : 732 sq.ft. (68.0 sq.m.) approx.
Made with Metropix ©2022

www.falconlettings.com

8 Mannamead Road Mutley Plymouth PL4 7AA

Email: lettings@falconproperty.com

