



Falcon

01752 600444

31 Mount Gould Avenue

Plymouth, PL4 9HA

£249,950





In Brief

Stylish extended family home with stunning kitchen-diner & sun-filled garden

Reception Rooms	Large sunny living room and fabulous kitchen/diner extension.	Parking	On street parking
Bedrooms	3 bedrooms	Council Tax	B
Heating	Gas central heating		
Area	970 Sq Ft		
Tenure	Freehold		

Description

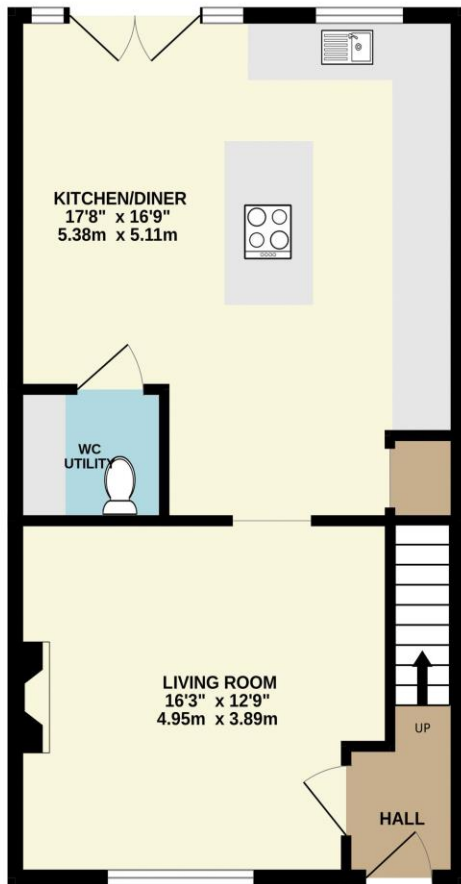
Located in a well regarded and well-established residential area, this beautifully presented 1950s three-bedroom extended semi-detached home offers the perfect blend of character, style, and modern family living. Upon entering, you are welcomed by a bright reception hallway leading to a charming and sun-filled living room at the front of the property—an inviting space ideal for relaxing or entertaining. An elegant archway opens into the true heart of the home: a stunning, thoughtfully extended kitchen/diner. This impressive space features a contemporary fitted kitchen complete with an integrated oven and hob, complemented by stylish finishes throughout. Flooded with natural light from Velux-style ceiling windows and enhanced by double doors opening onto the rear garden, this area provides a seamless indoor-outdoor living experience and a fantastic social hub for family life. Upstairs, the property offers three well-proportioned bedrooms accessed from the first-floor landing, along with a beautifully extended and recently updated bathroom. The bathroom boasts a sleek, modern suite including both a bath and a separate shower cubicle, finished to a high standard. Additional benefits include gas central heating and uPVC double glazing throughout, ensuring comfort and efficiency year-round. Externally, the rear garden is a standout feature—generous in size and thoughtfully landscaped to create multiple areas for relaxation and enjoyment. With a patio, artificial lawn, and a spacious decked seating area, the garden is designed to capture sunlight throughout the day, making it perfect for outdoor entertaining. Ideally located close to well-regarded schools, local shops, and with easy access to Plymouth city centre, this property represents an excellent opportunity for first-time buyers and growing families alike. A truly fabulous home that must be viewed to be fully appreciated.

Need A Mortgage?

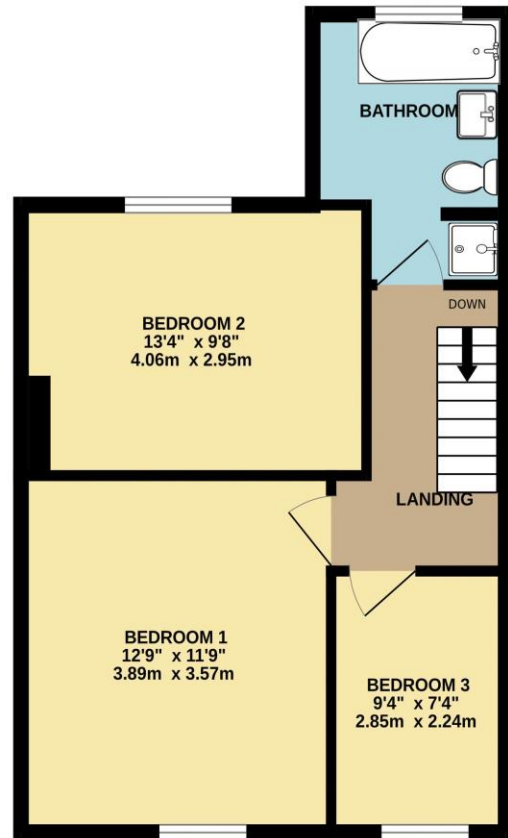
Don't pay more than you need to for your mortgage advice:
ours is only £195 paid when you move!

Floor Plans

GROUND FLOOR
513 sq.ft. (47.7 sq.m.) approx.



1ST FLOOR
457 sq.ft. (42.5 sq.m.) approx.



TOTAL FLOOR AREA : 970 sq.ft. (90.1 sq.m.) approx.
Made with Metropix ©2026



Fixed Price Conveyancing

A complete solution from just £600 with No sale – No Fee



We have not tested any apparatus, equipment, fixtures and fittings or services and so cannot verify that they are connected, in working order or fit for the purpose. Neither have we had sight of the legal documents to verify the Freehold or Leasehold status of any property; or sight of any consents, including Planning Permissions, building Regulations and Breaches of Covenants that may be required for alterations to the property. A buyer is advised to obtain verification from their Solicitor and/or Surveyor. Items shown in photographs are NOT included unless specifically mentioned within the Sales Particulars. Any floor plans on these details are not drawn to scale and are intended for guidance only

Falcon Property is an Introducer to Bradleys Financial Management Ltd. They are appointed representatives of Sesame Ltd who are authorised and regulated by the Financial Services Authority. Bradleys do not charge for mortgage advice, however a fee paying option is available. Typical fee is £195. Bradleys Financial Management: 16 Mannamead Road, Mutley, Plymouth, PL4 7AA

Your home may be repossessed if you do not keep up repayments on your mortgage.

