



Falcon
lettings

9 Wycliffe Road

Plymouth, Plymouth, PL3 6BZ

£1,250 pcm

01752 600828



In Brief

Wycliffe Road - Two bedroom house

Large living/dining room

Good sized Kitchen & Conservatory

Freshly decorated with new carpets

Rear patio area with large garden space

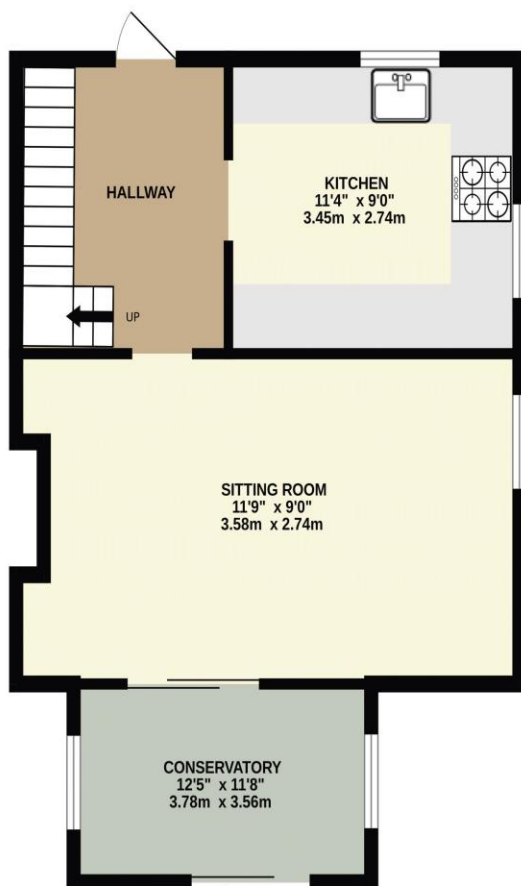
On street parking

Council Tax band - B EPC - C

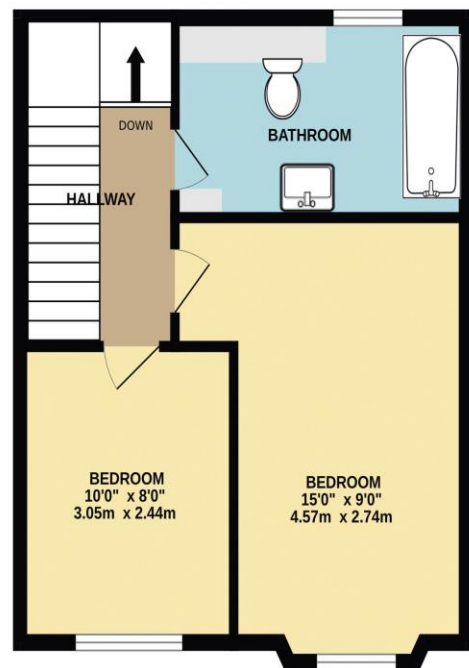
Holding deposit £288 - Total deposit £1,442

This property is Fully Managed by Falcon Lettings

GROUND FLOOR
541 sq.ft. (50.3 sq.m.) approx.



1ST FLOOR
411 sq.ft. (38.2 sq.m.) approx.



TOTAL FLOOR AREA : 952 sq.ft. (88.5 sq.m.) approx.
Made with Metropix ©2026

www.falconlettings.com

8 Mannamead Road Mutley Plymouth PL4 7AA

Email: lettings@falconproperty.com

