



Falcon

01752 600444

282 Saltash Road

Keyham, Plymouth, PL2 2DG

Guide price £230,000- £240,000





In Brief

Mid terrace period property

Reception Rooms	Living room - Dining room and Breakfast room - Bar	Parking	Garage
Bedrooms	Three Bedrooms		
Heating	Gas Central Heating		
Tenure	Freehold		

Description

A spacious mid-terrace period home full of character, superbly located and presented to a good standard throughout. This attractive period property offers generous accommodation arranged over two floors and retains many charming character features, making it an ideal family home or investment opportunity. On entering the property, you are welcomed into a bright and comfortable living room, complete with a feature fireplace that creates a lovely focal point. This is complemented by a separate dining room, ideal for entertaining or family meals. To the rear of the property is a well-proportioned kitchen, which in turn leads through to an additional breakfast room, currently set up as a bar area, providing a versatile and sociable space. A downstairs bathroom completes the ground floor accommodation. To the first floor, the property boasts three good-sized double bedrooms, offering plenty of space for families or sharers, along with a modern family shower room. A real standout feature of this home is the garage, providing valuable off-road parking — a rare and highly desirable benefit in this location. The property also enjoys a front garden, being nicely set back from the main road, adding to its appeal. Situated in a fantastic location on Saltash Road, Keyham, the property is conveniently positioned close to the Royal Navy Dockyard and Royal Navy Barracks, as well as Plymouth Dockyard. It also benefits from easy access to local primary and secondary schools, excellent transport links, and convenient routes to the A38. A characterful and spacious home in a prime location — viewing is highly recommended to fully appreciate everything on offer

Need A Mortgage?

Don't pay more than you need to for your mortgage advice: ours is only £195 paid when you move!

Floor Plans

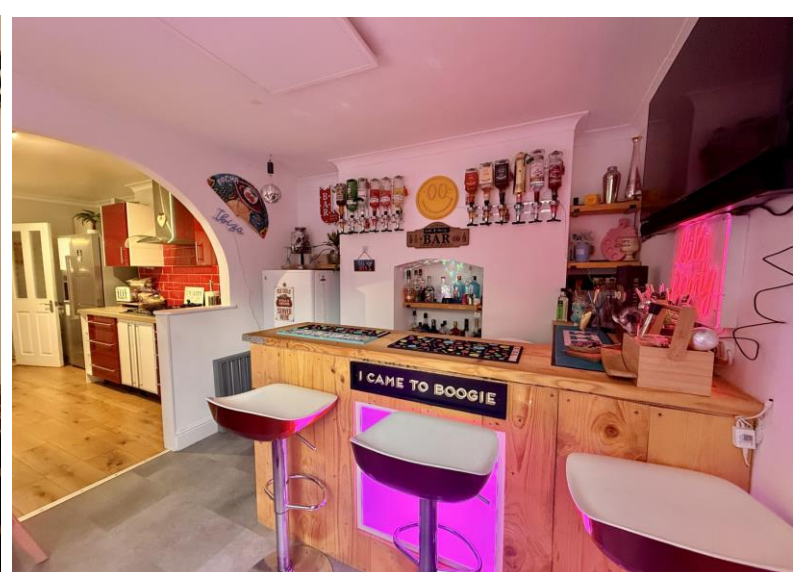
GROUND FLOOR



1ST FLOOR



Made with Metropix ©2026



Fixed Price Conveyancing

A complete solution from just £600 with No sale – No Fee



We have not tested any apparatus, equipment, fixtures and fittings or services and so cannot verify that they are connected, in working order or fit for the purpose. Neither have we had sight of the legal documents to verify the Freehold or Leasehold status of any property; or sight of any consents, including Planning Permissions, building Regulations and Breaches of Covenants that may be required for alterations to the property. A buyer is advised to obtain verification from their Solicitor and/or Surveyor. Items shown in photographs are NOT included unless specifically mentioned within the Sales Particulars. Any floor plans on these details are not drawn to scale and are intended for guidance only

Falcon Property is an Introducer to Bradleys Financial Management Ltd. They are appointed representatives of Sesame Ltd who are authorised and regulated by the Financial Services Authority. Bradleys do not charge for mortgage advice, however a fee paying option is available. Typical fee is £195. Bradleys Financial Management: 16 Mannamead Road, Mutley, Plymouth, PL4 7AA

Your home may be repossessed if you do not keep up repayments on your mortgage.

