



Falcon

01752 600444

20 Beaufort House, Mariners Court

Lower Street, Plymouth, PL4 0BS

Guide Price £325,000 - £350,000



In Brief

First floor Stunning chain free Apartment

Reception Rooms	Living room - dining room	Parking	Gated secure parking
Bedrooms	2 Bedrooms	Council Tax	E
Heating	Electric Heating		
Area	683SQFT		
Tenure	Leasehold		

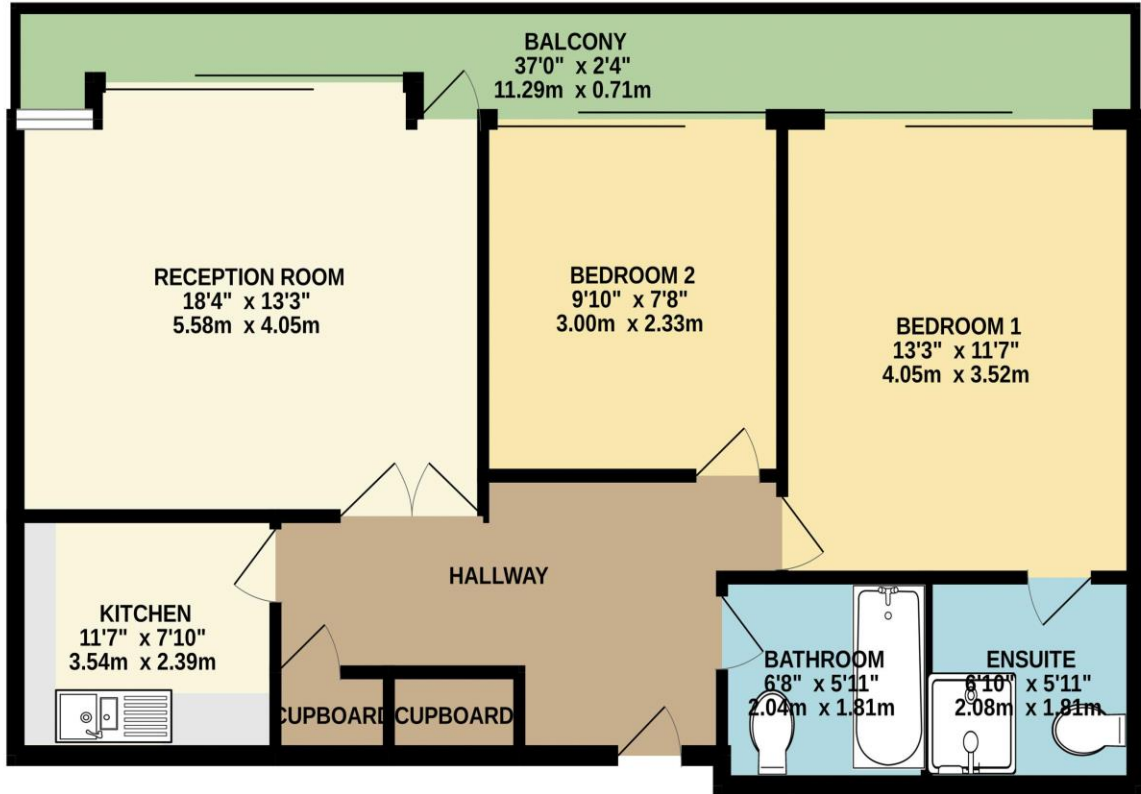
Description

Situated in the ever-popular Barbican location, this exceptional first-floor, two-bedroom purpose-built apartment enjoys truly uninterrupted views across the harbour, with a front-row seat to the ever-changing backdrop of sailing boats and waterfront life. Living here would be an absolute privilege — positioned just moments from Plymouth city centre and the historic charm of the Barbican, yet offering peace, security, and exclusivity. The development benefits from private gated access, with secure entry systems for both the parking area and the building itself, providing reassurance and convenience. The apartment itself is presented to a stunning standard and is being offered to the market with vacant possession, ready for its next owner to move straight in and enjoy. A standout feature is the generous balcony, perfectly positioned to face directly onto the harbour — an idyllic spot for morning coffee, evening drinks, or simply soaking in the panoramic waterfront views. Internally, the property offers two well-proportioned bedrooms, with the primary bedroom benefiting from a stylish en-suite. The kitchen is thoughtfully arranged as a separate space, yet cleverly incorporates a glass window through to the living area, maintaining a sociable feel while still allowing those incredible views to remain a focal point of the home. The main living area is light-filled and perfectly frames the harbour outlook. Whether you are searching for a spectacular main residence, a luxury downsizer, or a stunning holiday home by the sea, this apartment offers lifestyle in abundance. A rare opportunity in a highly sought-after waterfront position — this is one not to be missed. Early viewing is highly recommended

Need A Mortgage?

Don't pay more than you need to for your mortgage advice:
ours is only £195 paid when you move!

GROUND FLOOR
683 sq.ft. (63.5 sq.m.) approx.



TOTAL FLOOR AREA: 683 sq.ft. (63.5 sq.m.) approx.
Made with Metropix ©2026



We have not tested any apparatus, equipment, fixtures and fittings or services and so cannot verify that they are connected, in working order or fit for the purpose. Neither have we had sight of the legal documents to verify the Freehold or Leasehold status of any property; or sight of any consents, including Planning Permissions, building Regulations and Breaches of Covenants that may be required for alterations to the property. A buyer is advised to obtain verification from their Solicitor and/or Surveyor. Items shown in photographs are NOT included unless specifically mentioned within the Sales Particulars. Any floor plans on these details are not drawn to scale and are intended for guidance only

Falcon Property is an Introducer to Bradleys Financial Management Ltd. They are appointed representatives of Sesame Ltd who are authorised and regulated by the Financial Services Authority. Bradleys do not charge for mortgage advice, however a fee paying option is available. Typical fee is £195. Bradleys Financial Management: 16 Mannamead Road, Mutley, Plymouth, PL4 7AA

Your home may be repossessed if you do not keep up repayments on your mortgage.

