



Falcon
lettings

01752 600828

36 Dovedale Road

Plymouth, Plymouth, PL2 2RS

£1,000 pcm



In Brief

Freshly decorated two bedroom bungalow

Kitchen/dining area

Living room with conservatory

Shower room

Garage & driveway

Outside cellar & level garden

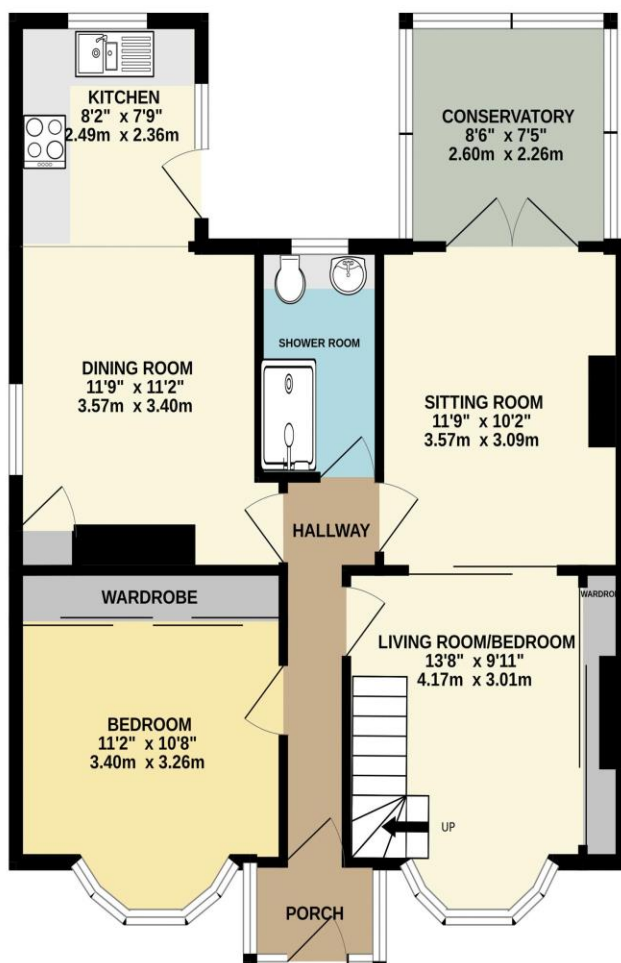
Council Tax Band - C EPC - D (Will be renewed)

Holding deposit £230 - Total Deposit £1,153

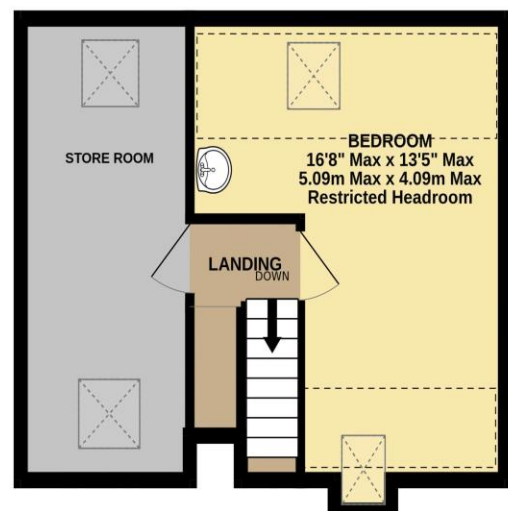
Looking for a long term Let!

This property will be Fully Managed by Falcon Lettings

GROUND FLOOR
720 sq.ft. (66.9 sq.m.) approx.



1ST FLOOR
337 sq.ft. (31.3 sq.m.) approx.



TOTAL FLOOR AREA : 1057 sq.ft. (98.2 sq.m.) approx.

Made with Metropix ©2023

www.falconlettings.com

8 Mannamead Road Mutley Plymouth PL4 7AA

Email: lettings@falconproperty.com

