



Falcon

01752 600444

8 Normandy Way

Higher St Budeaux, Plymouth, PL5 1SP

Guide Price £270,000 - £280,000





In Brief

1930s Semi detached well presented Property

Reception Rooms Living room - Dining room

Bedrooms Three bedrooms

Heating Gas Central Heating

Area 824 Sq Ft

Tenure Freehold

Parking Off street parking

Council Tax C

Description

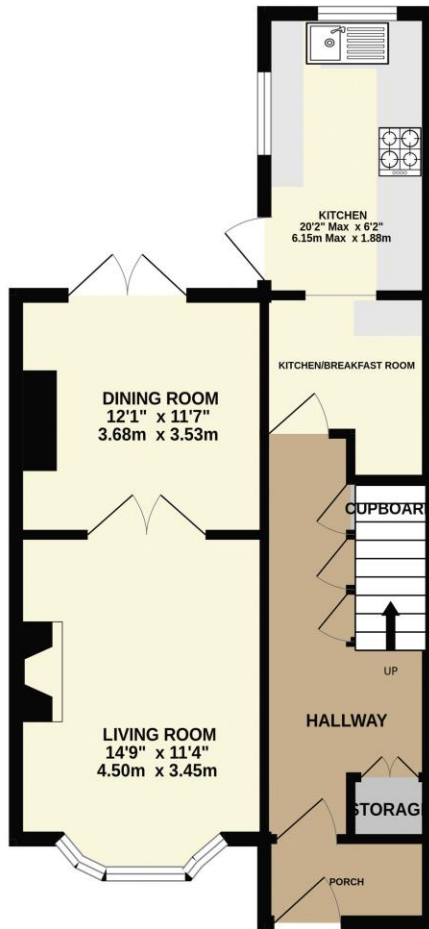
This beautifully presented 1930s semi-detached home has been extensively upgraded and refurbished throughout, offering a stylish, modern interior ready for immediate occupation. The ground floor features a superb open-plan living and dining area enhanced by attractive bay windows, flowing seamlessly into a generous, contemporary kitchen. French doors from the kitchen open directly onto the rear garden, creating an ideal space for both everyday living and entertaining. Additional benefits include a welcoming porch, brand-new double glazing throughout, and newly installed gas central heating. To the first floor, the property offers two well-proportioned double bedrooms alongside a comfortable single bedroom. The modern family bathroom boasts a four-piece suite comprising a separate shower, bath, wash hand basin, and WC. Externally, the home benefits from off-street parking and low-maintenance front and rear gardens, with the rear garden being predominantly laid to lawn. Ideally situated in a sought-after location with excellent access to the A38, Cornwall Gateway, highly regarded schools, and a range of local amenities. Offered to the market with no onward chain, this fantastic home must be viewed to be fully appreciated. Do not miss your chance to see this property.

Need A Mortgage?

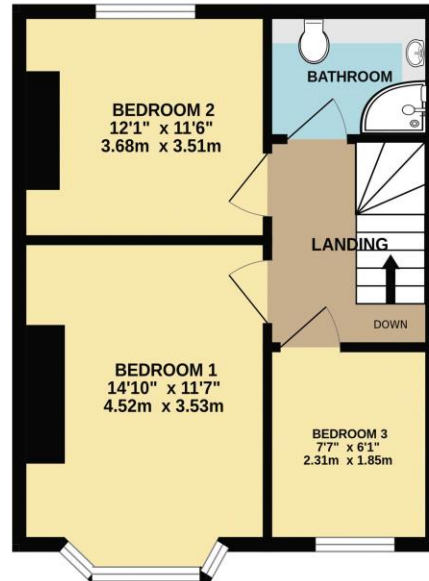
Don't pay more than you need to for your mortgage advice:
ours is only £195 paid when you move!

Floor Plans

GROUND FLOOR
468 sq.ft. (43.5 sq.m.) approx.



1ST FLOOR
357 sq.ft. (33.1 sq.m.) approx.



TOTAL FLOOR AREA : 824 sq.ft. (76.6 sq.m.) approx.
Made with Metropix ©2025



Fixed Price Conveyancing

A complete solution from just £600 with No sale – No Fee



We have not tested any apparatus, equipment, fixtures and fittings or services and so cannot verify that they are connected, in working order or fit for the purpose. Neither have we had sight of the legal documents to verify the Freehold or Leasehold status of any property; or sight of any consents, including Planning Permissions, building Regulations and Breaches of Covenants that may be required for alterations to the property. A buyer is advised to obtain verification from their Solicitor and/or Surveyor. Items shown in photographs are NOT included unless specifically mentioned within the Sales Particulars. Any floor plans on these details are not drawn to scale and are intended for guidance only

Falcon Property is an Introducer to Bradleys Financial Management Ltd. They are appointed representatives of Sesame Ltd who are authorised and regulated by the Financial Services Authority. Bradleys do not charge for mortgage advice, however a fee paying option is available. Typical fee is £195. Bradleys Financial Management: 16 Mannamead Road, Mutley, Plymouth, PL4 7AA

Your home may be repossessed if you do not keep up repayments on your mortgage.

