

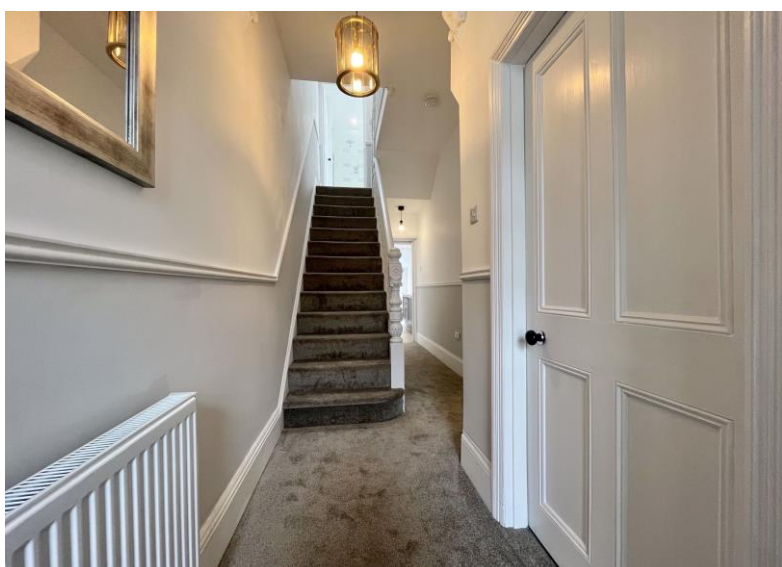
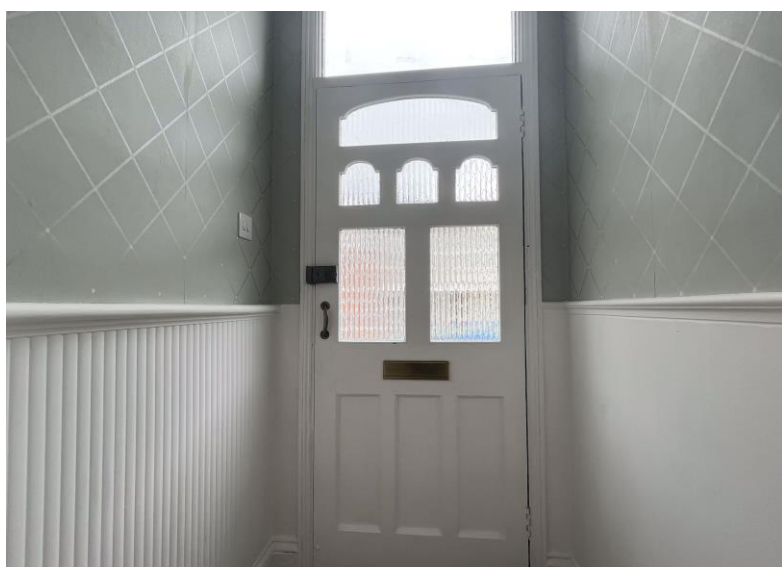


**Falcon**  
lettings

01752 600828

**18 Ganna Park Road**  
Peverell, Plymouth, PL3 4NN

**£1,450 pcm**



## In Brief

### Two double bedrooms & One single bedroom

Large lounge & dining room with sliding doors

Modern fitted kitchen with white goods

Modern bathroom with free-standing bath & walk-in shower

Rear courtyard space

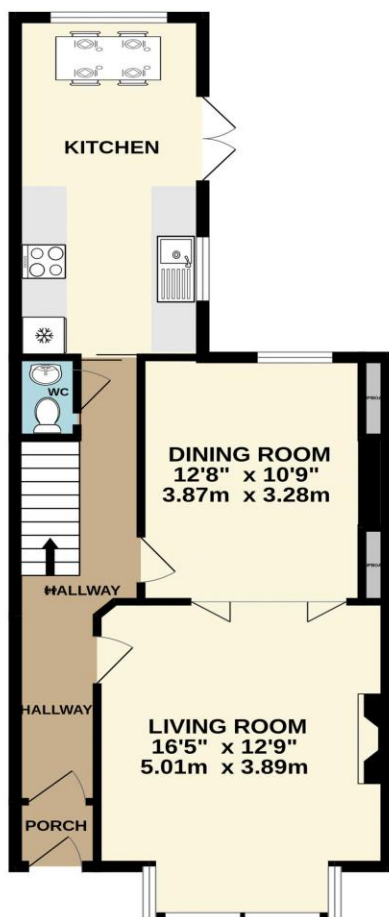
On-street parking, no permit needed

EPC - C Council Tax - C

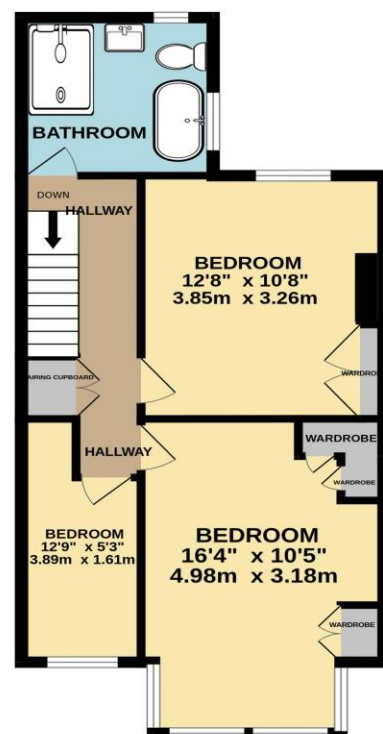
Holding Deposit £334 Total Deposit £1,673

This Property will be Managed by the landlords

GROUND FLOOR  
591 sq.ft. (55.0 sq.m.) approx.



1ST FLOOR  
500 sq.ft. (46.4 sq.m.) approx.



TOTAL FLOOR AREA : 1091 sq.ft. (101.4 sq.m.) approx.  
Made with Metropix ©2023

[www.falconlettings.com](http://www.falconlettings.com)

8 Mannamead Road Mutley Plymouth PL4 7AA

Email: [lettings@falconproperty.com](mailto:lettings@falconproperty.com)

