



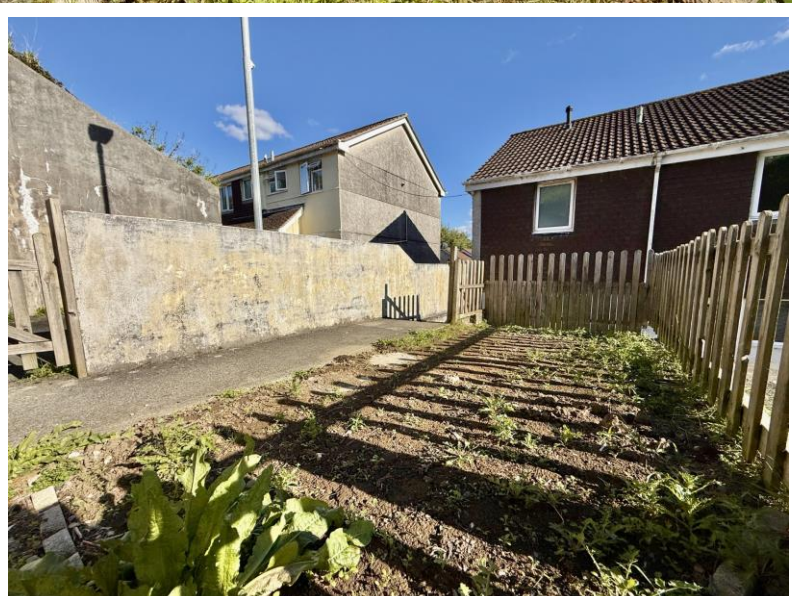
Falcon

01752 600444

42 Jackson Close

Plymouth, PL5 1AS

Guide Price £160,000 - £170,000





In Brief

Modern 2 double bedroomed End-Terraced Gem with Woodland Views and a GARAGE

Reception Rooms Large living room / dining room

Bedrooms 2 Double bedrooms

Heating Gas central heating

Area 619 sq ft

Tenure Freehold

Parking Garage plus on street

Council Tax A

Description

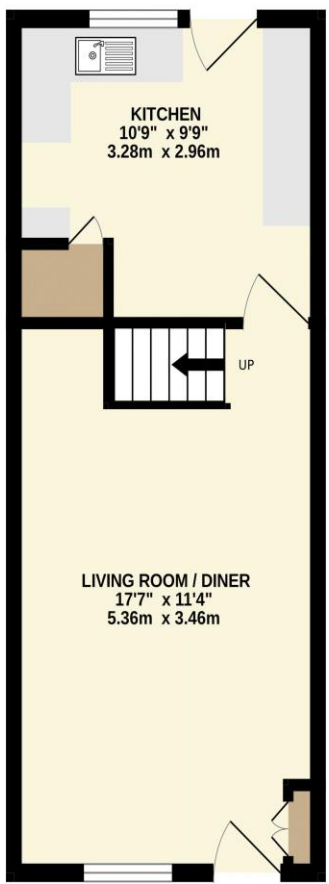
Tucked away along a peaceful, traffic-free walkway, towards the end of this quiet cul-de-sac this stylish 2-bedroom end-terraced home offers the perfect blend of modern comfort and natural outlooks. Step inside to a bright and spacious living/dining room, with a staircase leading to the first floor. The well-fitted kitchen sits at the rear of the home, boasting modern style units and direct access to the garden—ideal for entertaining or enjoying a morning coffee outdoors. Upstairs, you'll find two generous double bedrooms and a modern style bathroom with a shower-over-bath setup, perfectly balancing style and practicality. With gas central heating and uPVC double glazing, this home is ready to move into. The front of the property enjoys a lovely open aspect, with views of trees and woodland beyond neighbouring houses, creating a tranquil backdrop. Outside, there's a grassy area of garden, a patio seating area for summer evenings, and a garage nearby in a block—a real bonus for storage or parking. Ideal for first-time buyers or savvy investors, this home ticks all the boxes: modern interiors, a quiet setting, and a great location.

Need A Mortgage?

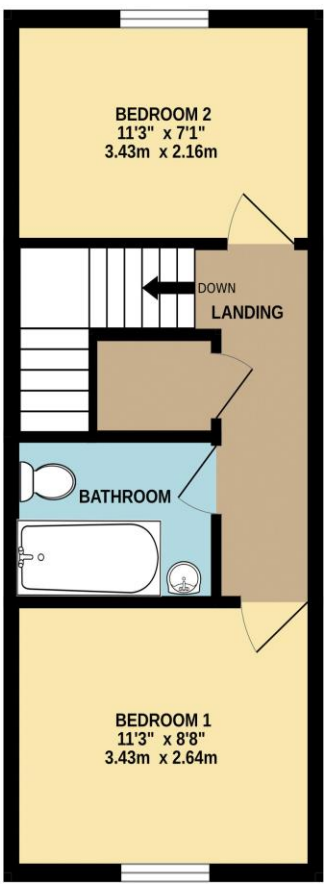
**Don't pay more than you need to for your mortgage advice:
ours is only £195 paid when you move!**

Floor Plans

GROUND FLOOR
310 sq.ft. (28.8 sq.m.) approx.



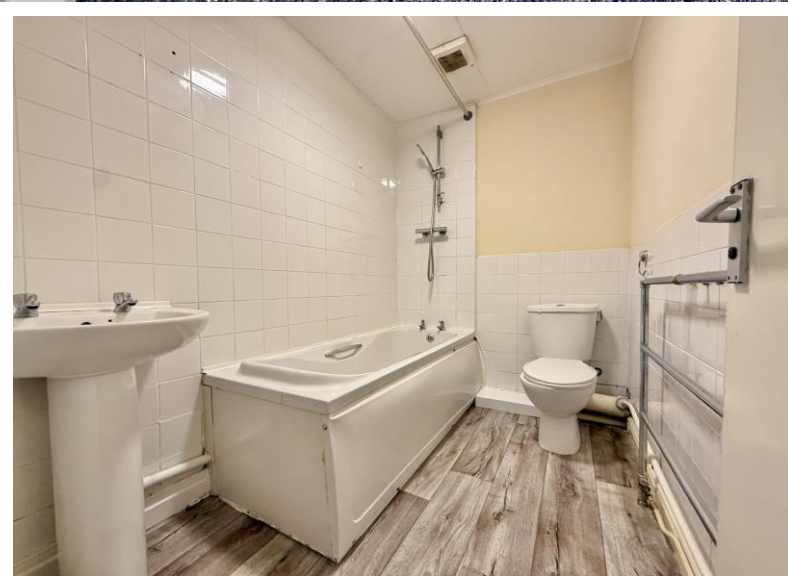
1ST FLOOR
309 sq.ft. (28.7 sq.m.) approx.



TOTAL FLOOR AREA: 619 sq.ft. (57.5 sq.m.) approx.
Made with Metropix ©2025



Fixed Price Conveyancing
A complete solution from just £600 with No sale – No Fee



We have not tested any apparatus, equipment, fixtures and fittings or services and so cannot verify that they are connected, in working order or fit for the purpose. Neither have we had sight of the legal documents to verify the Freehold or Leasehold status of any property; or sight of any consents, including Planning Permissions, building Regulations and Breaches of Covenants that may be required for alterations to the property. A buyer is advised to obtain verification from their Solicitor and/or Surveyor. Items shown in photographs are NOT included unless specifically mentioned within the Sales Particulars. Any floor plans on these details are not drawn to scale and are intended for guidance only

Falcon Property is an Introducer to Bradleys Financial Management Ltd. They are appointed representatives of Sesame Ltd who are authorised and regulated by the Financial Services Authority. Bradleys do not charge for mortgage advice, however a fee paying option is available. Typical fee is £195. Bradleys Financial Management: 16 Mannamead Road, Mutley, Plymouth, PL4 7AA

Your home may be repossessed if you do not keep up repayments on your mortgage.

