



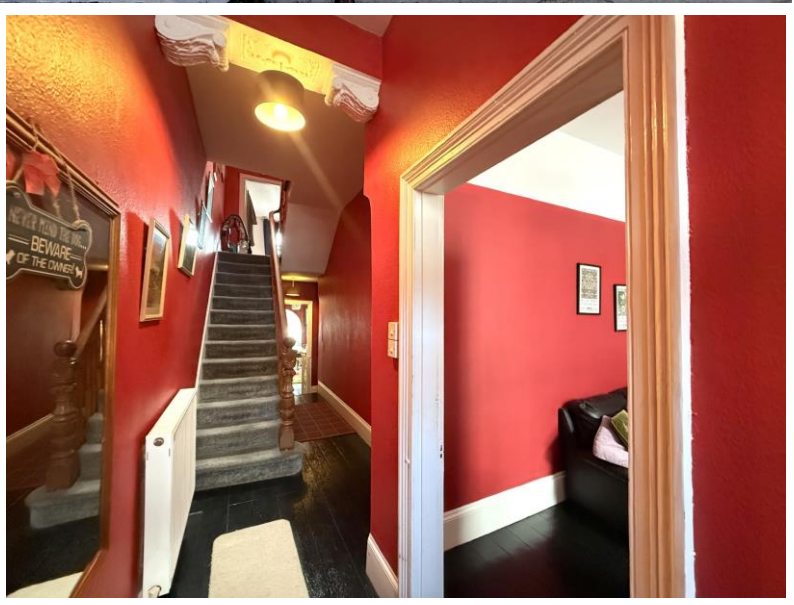
Falcon

01752 600444

33 Gifford Place

Peverell, Plymouth, PL3 4JA

£275,000





In Brief

Spacious well presented period property with 3 double bedrooms

Reception Rooms	Living room - separate dining room and Living room		
Bedrooms	3 Bedrooms		
Heating	Gas central heating	Parking	On Street
Area	1120 Sq Ft	Council Tax	C
Tenure	Freehold		

Description

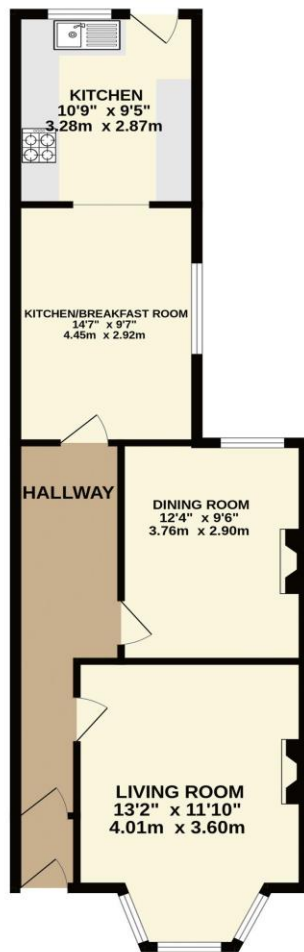
This larger-than-average mid-terrace property is set in a popular and convenient location, offering spacious accommodation throughout. To the ground floor, the home briefly comprises a welcoming living room, separate dining room, breakfast room, and a well-proportioned kitchen. Upstairs, there are three generous double bedrooms alongside a modern family bathroom, making it ideal for growing families or those seeking extra space. Externally, the property boasts a south-facing private courtyard and a wall-enclosed garden to the rear, providing a secure and peaceful outdoor retreat. The rear aspect enjoys an open and tranquil outlook with no properties directly behind, enhancing both privacy and a sense of space. Early viewing is highly recommended to fully appreciate the size, character, and potential this home has to offer.

Need A Mortgage?

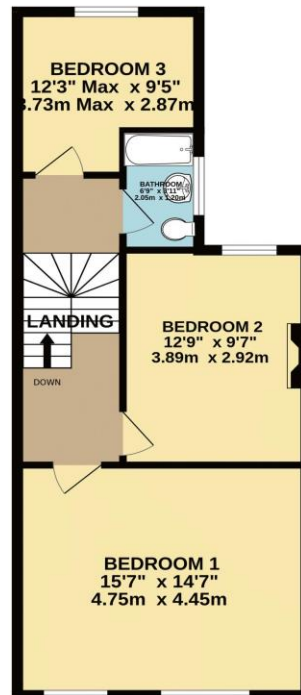
Don't pay more than you need to for your mortgage advice:
ours is only £195 paid when you move!

Floor Plans

GROUND FLOOR
619 sq.ft. (57.5 sq.m.) approx.



1ST FLOOR
501 sq.ft. (46.5 sq.m.) approx.



TOTAL FLOOR AREA : 1120 sq.ft. (104.0 sq.m.) approx.
Made with Metropix ©2025



Fixed Price Conveyancing

A complete solution from just £600 with No sale – No Fee



We have not tested any apparatus, equipment, fixtures and fittings or services and so cannot verify that they are connected, in working order or fit for the purpose. Neither have we had sight of the legal documents to verify the Freehold or Leasehold status of any property; or sight of any consents, including Planning Permissions, building Regulations and Breaches of Covenants that may be required for alterations to the property. A buyer is advised to obtain verification from their Solicitor and/or Surveyor. Items shown in photographs are NOT included unless specifically mentioned within the Sales Particulars. Any floor plans on these details are not drawn to scale and are intended for guidance only

Falcon Property is an Introducer to Bradleys Financial Management Ltd. They are appointed representatives of Sesame Ltd who are authorised and regulated by the Financial Services Authority. Bradleys do not charge for mortgage advice, however a fee paying option is available. Typical fee is £195. Bradleys Financial Management: 16 Mannamead Road, Mutley, Plymouth, PL4 7AA

Your home may be repossessed if you do not keep up repayments on your mortgage.

