



Falcon
lettings

01752 600828

28 Lydford Park Road

Peverell, Plymouth, PL3 4LQ

£1,100 pcm



In Brief

Mid Terrace Refurbished & Modernised Property

Living Room & Kitchen/Diner

Two Bedroom

Good Sized Garden

Gas Central Heating

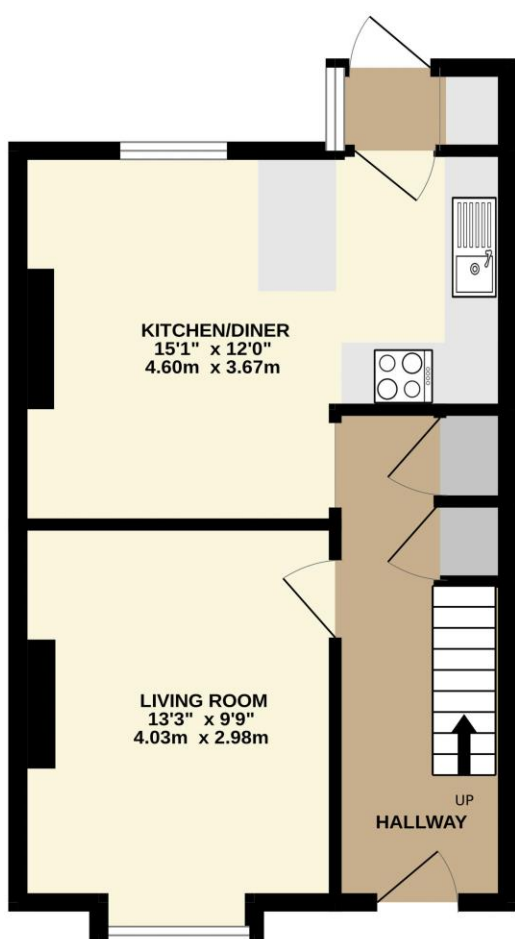
On Street Parking

Council Tax Band - B - EPC Rating - D

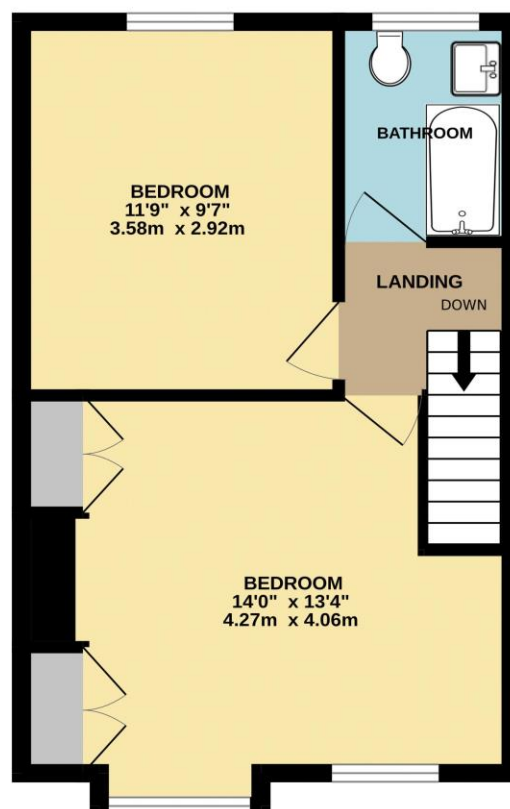
Holding Deposit £253 Total Deposit £1,269

This Property will be Fully Managed by Falcon Lettings

GROUND FLOOR
377 sq.ft. (35.1 sq.m.) approx.



1ST FLOOR
365 sq.ft. (33.9 sq.m.) approx.



TOTAL FLOOR AREA : 742 sq.ft. (69.0 sq.m.) approx.
Made with Metropix ©2024

www.falconlettings.com

8 Mannamead Road Mutley Plymouth PL4 7AA

Email: lettings@falconproperty.com

