



**Falcon**  
lettings

01752 600828

**41 Lydford Park Road**  
Plymouth, Plymouth, PL3 4LQ  
£1,100 pcm



## In Brief

### Lydford Park Road great location close to Central Park

One Double bedroom and One single bedroom

Separate sitting room and lounge

This property will be unfurnished

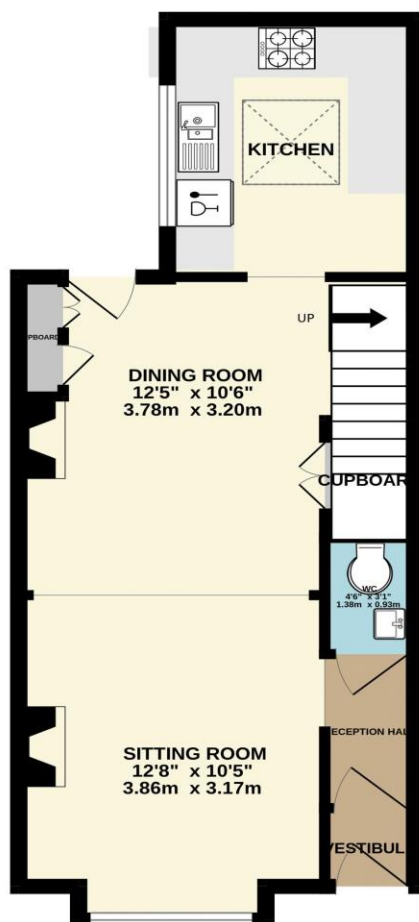
On street parking

Council Tax Band - B EPC Rating - D

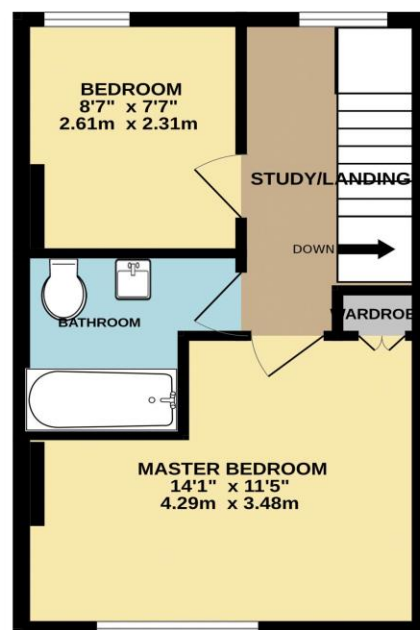
Holding Deposit £253 Total Deposit £1,269

This property will be Fully Managed by Falcon Lettings

GROUND FLOOR



1ST FLOOR



Made with Metropix ©2025

[www.falconlettings.com](http://www.falconlettings.com)

8 Mannamead Road Mutley Plymouth PL4 7AA

Email: [lettings@falconproperty.com](mailto:lettings@falconproperty.com)

