



Falcon

01752 600444

75 Station Road

Keyham, Plymouth, PL2 1NJ

Guide Price £210,000 - £220,000





In Brief

A gorgeous 3 double bedroomed family home, 2 reception rooms and a sunny garden

Reception Rooms Large living room with separate dining room

Bedrooms Three double bedrooms

Heating Gas central heating

Parking On street parking

Area 1178 Sq ft

Council Tax B

Tenure Freehold

Description

This charming three-bedroom period terraced house offers the perfect blend of character and modern living, making it an ideal family home or first-time buy. Situated in a well-established residential area, it's conveniently close to local schools, shops, and other amenities. Beautifully modernised in recent years while still showcasing its original features, the home includes a spacious living room and a separate dining room—ideal for family gatherings or entertaining guests. The kitchen/breakfast room is a generous size, filled with natural light and perfect for casual meals or morning coffee.

Upstairs, you'll find three good-sized double bedrooms, including a large main bedroom that stretches across the full width of the house, offering ample space and comfort. Modern comforts include gas central heating and UPVC double glazing throughout.

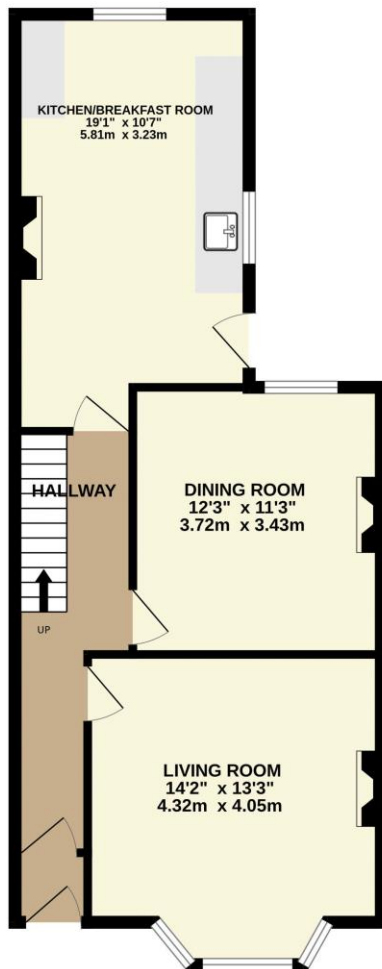
Outside, the south-facing rear garden is a real highlight—sunny and private, it's enclosed by charming original stone walls, creating a peaceful outdoor retreat. A thoughtfully updated home full of character and light—ready to move straight into.

Need A Mortgage?

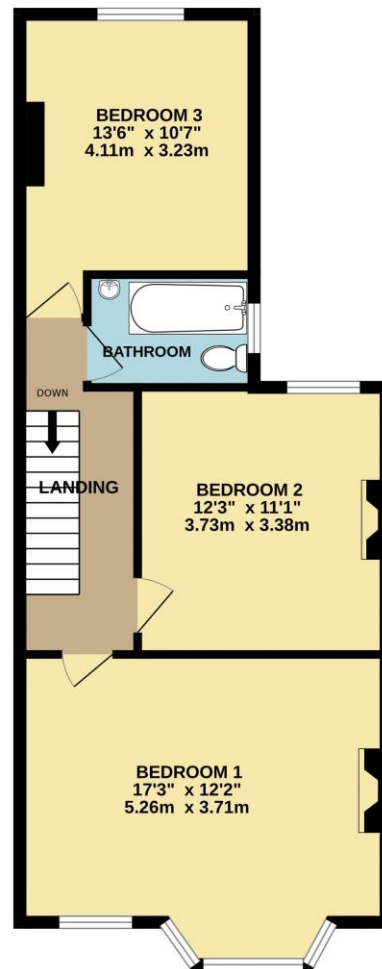
**Don't pay more than you need to for your mortgage advice:
ours is only £195 paid when you move!**

Floor Plans

GROUND FLOOR
589 sq.ft. (54.7 sq.m.) approx.



1ST FLOOR
588 sq.ft. (54.7 sq.m.) approx.



TOTAL FLOOR AREA : 1178 sq.ft. (109.4 sq.m.) approx.
Made with Metropix ©2025



Fixed Price Conveyancing

A complete solution from just £600 with No sale – No Fee



We have not tested any apparatus, equipment, fixtures and fittings or services and so cannot verify that they are connected, in working order or fit for the purpose. Neither have we had sight of the legal documents to verify the Freehold or Leasehold status of any property; or sight of any consents, including Planning Permissions, building Regulations and Breaches of Covenants that may be required for alterations to the property. A buyer is advised to obtain verification from their Solicitor and/or Surveyor. Items shown in photographs are NOT included unless specifically mentioned within the Sales Particulars. Any floor plans on these details are not drawn to scale and are intended for guidance only

Falcon Property is an Introducer to Bradleys Financial Management Ltd. They are appointed representatives of Sesame Ltd who are authorised and regulated by the Financial Services Authority. Bradleys do not charge for mortgage advice, however a fee paying option is available. Typical fee is £195. Bradleys Financial Management: 16 Mannamead Road, Mutley, Plymouth, PL4 7AA

Your home may be repossessed if you do not keep up repayments on your mortgage.

Energy Efficiency Rating		
	Current	Potential
Very energy efficient - lower running costs		
(92+) A		
(81-91) B		85
(69-80) C		
(55-68) D	65	
(39-54) E		
(21-38) F		
(1-20) G		
Not energy efficient - higher running costs		
England & Wales		EU Directive 2002/91/EC
WWW.EPC4U.COM		

