



Falcon

01752 600444

51 Skylark Rise

Woolwell, Plymouth, PL6 7SN

Guide Price £300,000-£325,000





In Brief

A fabulous 3 double bedroomed detached and extended family home, Driveway & GARAGE

Reception Rooms	Large living room, separate dining room and study/office		
Bedrooms	3 Double bedrooms		
Heating	Gas central heating	Parking	Double driveway + rear driveway + GARAGE
Area	1296 sq ft	Council Tax	C
Tenure	Freehold		

Description

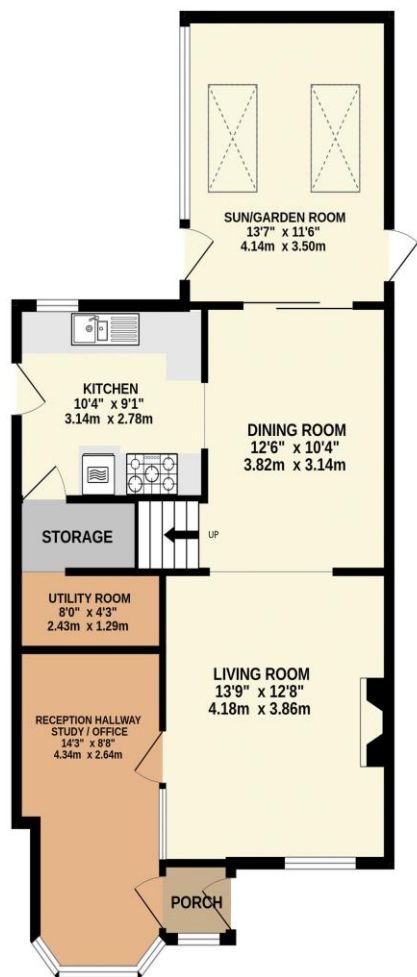
Located in this exceptional residential area is this well cared for and extended 3 double bedroomed detached family home. As you approach the house you will immediately see that it has been very cleverly and sensibly extended. The porch opens into a hallway / study room. Double doors open into the living room which is a good size, bright and sunny. The living room opens into the separate dining room. To the rear of the house there is a large conservatory which is such a great addition to the accommodation. The kitchen is well fitted with modern style units and there is a utility room. Off the first floor landing there are three good sized double bedrooms and a family bathroom with a shower over the bath. The property comes with gas central heating and upvc double glazing. The garden to the rear is made up of two areas, one paved patio and the second is decked. There is a lawn front garden and further area of garden to the side. there is a double driveway to the front whilst to the rear another driveway gives access to the large single GARAGE.

Need A Mortgage?

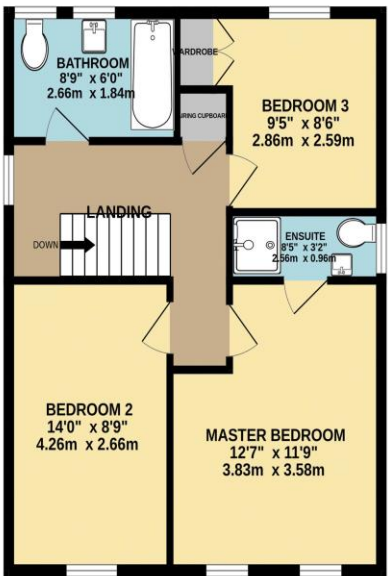
**Don't pay more than you need to for your mortgage advice:
ours is only £195 paid when you move!**

Floor Plans

GROUND FLOOR



1ST FLOOR



Made with Metropix ©2023



Fixed Price Conveyancing
A complete solution from just £600 with No sale – No Fee



We have not tested any apparatus, equipment, fixtures and fittings or services and so cannot verify that they are connected, in working order or fit for the purpose. Neither have we had sight of the legal documents to verify the Freehold or Leasehold status of any property; or sight of any consents, including Planning Permissions, building Regulations and Breaches of Covenants that may be required for alterations to the property. A buyer is advised to obtain verification from their Solicitor and/or Surveyor. Items shown in photographs are NOT included unless specifically mentioned within the Sales Particulars. Any floor plans on these details are not drawn to scale and are intended for guidance only

Falcon Property is an Introducer to Bradleys Financial Management Ltd. They are appointed representatives of Sesame Ltd who are authorised and regulated by the Financial Services Authority. Bradleys do not charge for mortgage advice, however a fee paying option is available. Typical fee is £195. Bradleys Financial Management: 16 Mannamead Road, Mutley, Plymouth, PL4 7AA

Your home may be repossessed if you do not keep up repayments on your mortgage.

