



Falcon

01752 600444

8 Crabtree Villas

Laira, Plymouth, PL3 6EN

Offers in Excess of £375,000





In Brief

Semi- Detached Dorma Bungalow

Reception Rooms Living room - Kitchen Diner

Bedrooms 4 Bedrooms

Heating Gas Central Avenue

Area 1327 sq ft

Tenure Freehold

Parking Off Road Parking Double Garage and Single Garage

Council Tax C

Description

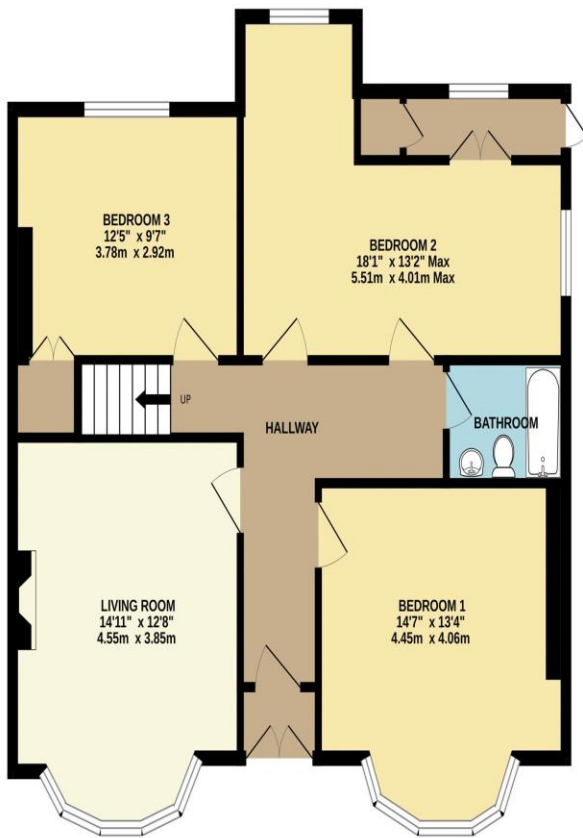
Located in this exceptionally convenient position with outstanding panoramic views of the River Plym, Saltram Estate and Dartmoor which can be enjoyed from virtually every part of the property is this fabulous and extended 4 bedroomed semi detached dorma style family home. Off the reception hallway you have a wonderful living room at the front which takes in the awesome views. Also on this floor are three further double bedrooms, one of which could easily be subdivided to form another bedroom. A bathroom completes the ground floor accommodation. As you arrive on the first floor you will be taken aback by the fabulous large kitchen / diner, incredibly stylish and well fitted with a contemporary finish and the breathtaking estuary outlook, it really is lovey! A pair of double doors open to the rear garden. There is a further double bedroom on this level which of course could also be used as an office / study but it does also have an en-suite bathroom with it. The property comes with gas central heating and upvc double glazing. The rear garden has been brilliantly landscaped with some striking local stone walling and an area of lawn with steps leading up to the three garages, it has both a double garage and a single! The wonderful outlook is also enjoyed from the garden at both the front and the rear. The property offers excellent access to both the A38 and the city center.

Need A Mortgage?

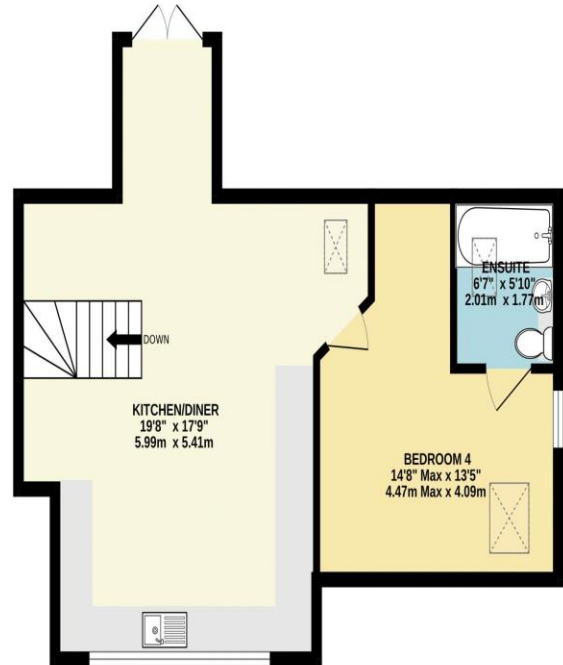
Don't pay more than you need to for your mortgage advice: ours is only £195 paid when you move!

Floor Plans

GROUND FLOOR
816 sq.ft. (75.9 sq.m.) approx.



1ST FLOOR
510 sq.ft. (47.4 sq.m.) approx.



TOTAL FLOOR AREA : 1327 sq.ft. (123.3 sq.m.) approx.
Made with Metropix ©2025



Fixed Price Conveyancing

A complete solution from just £600 with No sale – No Fee



We have not tested any apparatus, equipment, fixtures and fittings or services and so cannot verify that they are connected, in working order or fit for the purpose. Neither have we had sight of the legal documents to verify the Freehold or Leasehold status of any property; or sight of any consents, including Planning Permissions, building Regulations and Breaches of Covenants that may be required for alterations to the property. A buyer is advised to obtain verification from their Solicitor and/or Surveyor. Items shown in photographs are NOT included unless specifically mentioned within the Sales Particulars. Any floor plans on these details are not drawn to scale and are intended for guidance only

Falcon Property is an Introducer to Bradleys Financial Management Ltd. They are appointed representatives of Sesame Ltd who are authorised and regulated by the Financial Services Authority. Bradleys do not charge for mortgage advice, however a fee paying option is available. Typical fee is £195. Bradleys Financial Management: 16 Mannamead Road, Mutley, Plymouth, PL4 7AA

Your home may be repossessed if you do not keep up repayments on your mortgage.

