



Falcon

01752 600444

44 Linketty Lane West

Hartley Vale, Plymouth, PL3 5RY

Guide Price £290,000 - £300,000





In Brief

Semi - detached

Reception Rooms Living room - Dining room

Bedrooms 3 Bedrooms

Heating Gas central heating

Area 1, 094 Sq Ft

Tenure Freehold

Parking Off street parking

Council Tax C

Description

Three bedroom Semi- detached Home sought after location in Hartley - Vale Being offered to market Chain free. Nestled in the ever - popular and quiet cul-de-sac of Hartley Vale, this well proportioned three bedroom semi-detached property offers an excellent opportunity for families and buyers seeking a home in a prime location. The property features a long driveway , a garage , and a generous south westerly facing garden , perfect for enjoying afternoon sun. The ground floor comprises a welcoming living room, a dining room that flows seamlessly into an open plan galley style kitchen, and a bright sunroom offering extra living space with direct access to the rear garden.

Upstairs you will find three bedrooms and a family bathroom which presents scope for modernisation- ideal for those looking to add their own touch. Located within easy reach of highly regarded local schools , amenities and the A38 for excellent commuter links, this home is positioned in a very desirable area and is not to be missed.

Need A Mortgage?

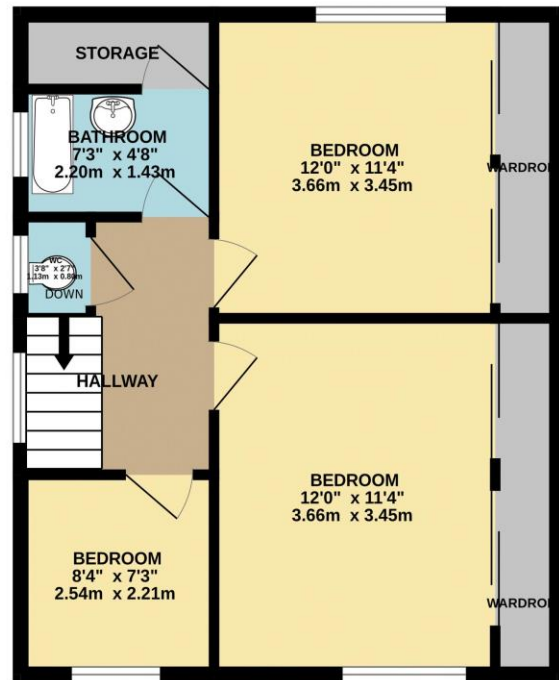
**Don't pay more than you need to for your mortgage advice:
ours is only £195 paid when you move!**

Floor Plans

GROUND FLOOR
611 sq.ft. (56.8 sq.m.) approx.



1ST FLOOR
483 sq.ft. (44.9 sq.m.) approx.

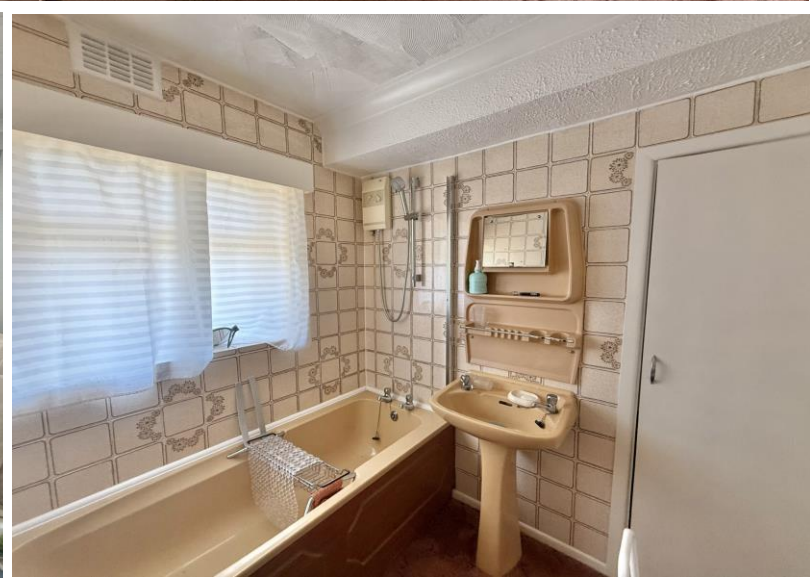
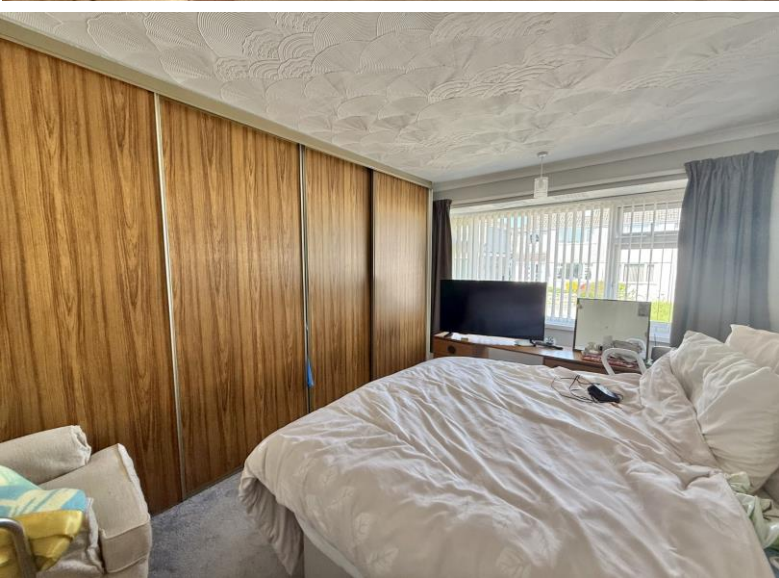


TOTAL FLOOR AREA : 1094 sq.ft. (101.6 sq.m.) approx.
Made with Metropix ©2025



Fixed Price Conveyancing

A complete solution from just £600 with No sale – No Fee



We have not tested any apparatus, equipment, fixtures and fittings or services and so cannot verify that they are connected, in working order or fit for the purpose. Neither have we had sight of the legal documents to verify the Freehold or Leasehold status of any property; or sight of any consents, including Planning Permissions, building Regulations and Breaches of Covenants that may be required for alterations to the property. A buyer is advised to obtain verification from their Solicitor and/or Surveyor. Items shown in photographs are NOT included unless specifically mentioned within the Sales Particulars. Any floor plans on these details are not drawn to scale and are intended for guidance only

Falcon Property is an Introducer to Bradleys Financial Management Ltd. They are appointed representatives of Sesame Ltd who are authorised and regulated by the Financial Services Authority. Bradleys do not charge for mortgage advice, however a fee paying option is available. Typical fee is £195. Bradleys Financial Management: 16 Mannamead Road, Mutley, Plymouth, PL4 7AA

Your home may be repossessed if you do not keep up repayments on your mortgage.

