



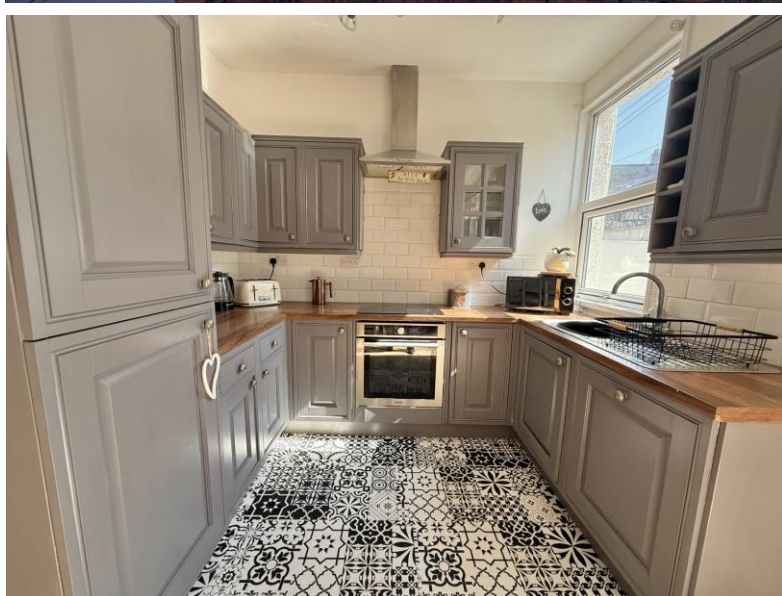
Falcon

01752 600444

12 Fullerton Road

Milehouse, Plymouth, PL2 3AX

Guide Price £260,000 - £270,000





In Brief

4 bedrooms

Reception Rooms Open Plan living - Dining - Kitchen Area

Bedrooms 4 Bedrooms

Heating Gas Central Heating

Area 1187Sqft (including Attic)

Tenure Freehold

Parking On Street Parking

Council Tax B

Description

Four bedroom Mid-Terraced property in the popular location Milehouse, just a stone throw away from Central Park and within easy reach of Plymouth City Centre this beautifully presented property offers Character , and convenience in equal measure.

The ground floor has a open plan kitchen/ diner that leads seamlessly through to the living room. Also patio doors extends to the patio area bringing a great space to soak up the morning sun .

The first floor hosts Two double bedrooms and a office/ third single bedroom and also a stylish family bathroom.

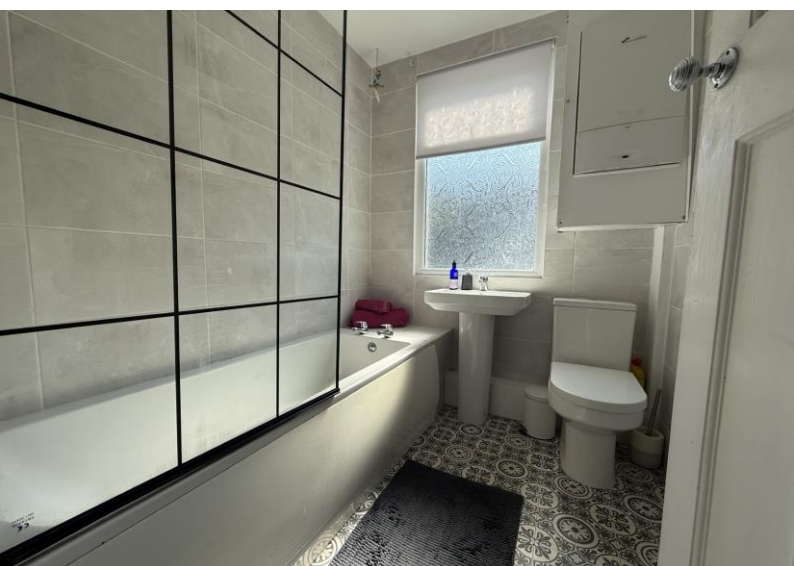
The Top floor has a beautifully presented Loft room and further bathroom suite. The property also has the benefit of solar panels that are owned and will go with the property giving a reduction on energy bills.

The property sits on a elevated plot , that is located in a desirable location, would be perfect for families and professionals , one not to be missed.

Need A Mortgage?

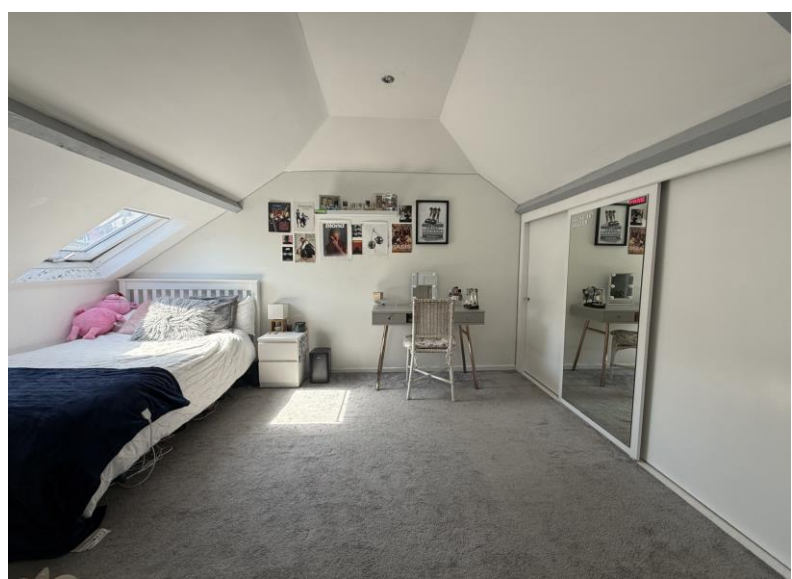
**Don't pay more than you need to for your mortgage advice:
ours is only £195 paid when you move!**

Floor Plans



Fixed Price Conveyancing

A complete solution from just £600 with No sale – No Fee



We have not tested any apparatus, equipment, fixtures and fittings or services and so cannot verify that they are connected, in working order or fit for the purpose. Neither have we had sight of the legal documents to verify the Freehold or Leasehold status of any property; or sight of any consents, including Planning Permissions, building Regulations and Breaches of Covenants that may be required for alterations to the property. A buyer is advised to obtain verification from their Solicitor and/or Surveyor. Items shown in photographs are NOT included unless specifically mentioned within the Sales Particulars. Any floor plans on these details are not drawn to scale and are intended for guidance only

Falcon Property is an Introducer to Bradleys Financial Management Ltd. They are appointed representatives of Sesame Ltd who are authorised and regulated by the Financial Services Authority. Bradleys do not charge for mortgage advice, however a fee paying option is available. Typical fee is £195. Bradleys Financial Management: 16 Mannamead Road, Mutley, Plymouth, PL4 7AA

Your home may be repossessed if you do not keep up repayments on your mortgage.

