



# Falcon

01752 600444

## 66 Treveneague Gardens

Plymouth, PL2 3SX

Guide Price £290,000-£300,000







## In Brief

### A 3 bedroomed semi detached family home with a fabulous rear garden and driveway

<b>Reception Rooms</b>	Large living room & separate dining room		
<b>Bedrooms</b>	3 bedrooms		
<b>Heating</b>	Gas central heating	<b>Parking</b>	Driveway parking
<b>Area</b>	921 sq ft	<b>Council Tax</b>	C
<b>Tenure</b>	Freehold		

## Description

Located in this fantastic and highly sought residential area is this lovely 3 bedroomed semi detached family home. As you approach the house you will see that it has a lovely sunny position on the road.

The front door opens into the entrance porch which leads into the reception hallway. The living room is a good size and a bright cheerful room that opens into the separate dining room that overlooks the garden. The kitchen is well fitted with a good range of units with a large window overlooking the garden.

Off the first floor landing there are three good sized bedrooms and a large bathroom. The bathroom has been refitted with a modern white suite that has a shower fitted over the bath. The property comes with gas central heating and upvc double glazing.

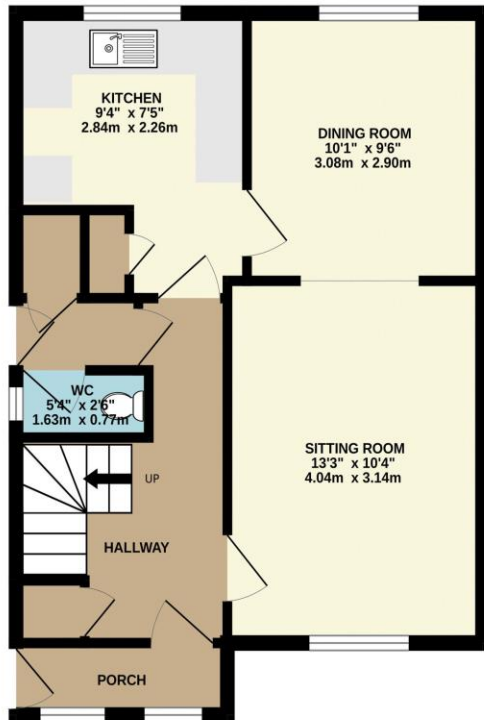
Outside to the rear of the house there is a fantastic garden, it really is a good size and brilliantly sunny. There is a large patio area that leads up to the lawn. At the top of the garden there is a lovely sunny seating area that overlooks a small pond. To the front of the house there is a good driveway for off road parking running down the side of the house. A fabulous family home close to some excellent schools and of course Plymouth's central Park.

**Need A Mortgage?**

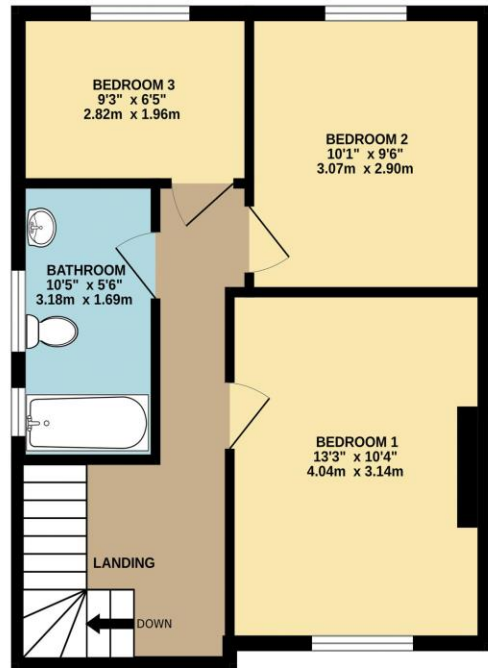
**Don't pay more than you need to for your mortgage advice:  
ours is only £195 paid when you move!**

# Floor Plans

GROUND FLOOR  
470 sq.ft. (43.7 sq.m.) approx.



1ST FLOOR  
450 sq.ft. (41.8 sq.m.) approx.



TOTAL FLOOR AREA: 921 sq.ft. (85.5 sq.m.) approx.  
Made with Metropix ©2025



## Fixed Price Conveyancing

A complete solution from just £600 with No sale – No Fee





We have not tested any apparatus, equipment, fixtures and fittings or services and so cannot verify that they are connected, in working order or fit for the purpose. Neither have we had sight of the legal documents to verify the Freehold or Leasehold status of any property; or sight of any consents, including Planning Permissions, building Regulations and Breaches of Covenants that may be required for alterations to the property. A buyer is advised to obtain verification from their Solicitor and/or Surveyor. Items shown in photographs are NOT included unless specifically mentioned within the Sales Particulars. Any floor plans on these details are not drawn to scale and are intended for guidance only

Falcon Property is an Introducer to Bradleys Financial Management Ltd. They are appointed representatives of Sesame Ltd who are authorised and regulated by the Financial Services Authority. Bradleys do not charge for mortgage advice, however a fee paying option is available. Typical fee is £195. Bradleys Financial Management: 16 Mannamead Road, Mutley, Plymouth, PL4 7AA

**Your home may be repossessed if you do not keep up repayments on your mortgage.**

