



Falcon

01752 600444

33 West Malling Avenue

Ernesettle, Plymouth, PL5 2SR

Guide Price £240,000 - £250,000





In Brief

A simply gorgeous 3 bedroomed family home, fabulous outside space, garage.

Reception Rooms	Large living room		
Bedrooms	Three good sized bedrooms		
Heating	Gas central heating	Parking	Driveway parking plus large garage.
Area	901 sq ft	Council Tax	A
Tenure	Freehold		

Description

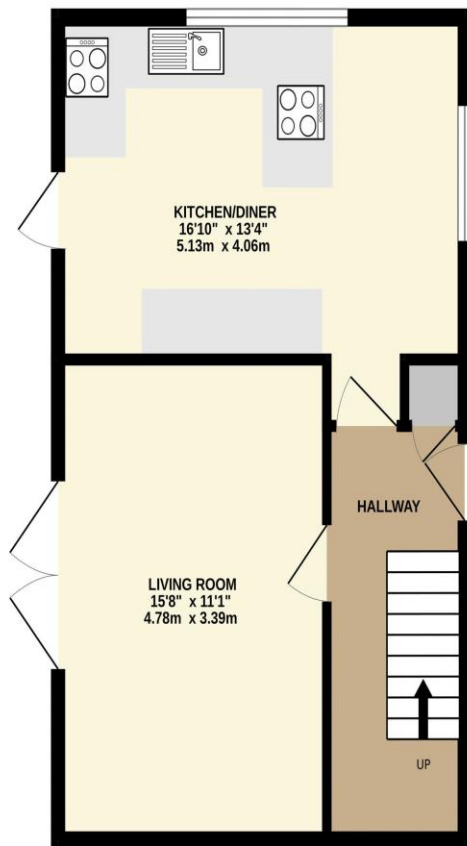
Located in this wonderful spot overlooking the Green is this beautiful 3 bedroomed semi detached family home. As you approach the house you will see the outside space with great offroad parking spaces plus a garage. Off the entrance hallway you have a wonderful stylish and contemporary fitted kitchen with integral oven and hob and two large windows allowing the light to flood in. The living room is lovely with a period fireplace as a focal point and a pair of double patio doors that open into the garden and a wonderful sunny aspect. Off the first floor landing you have three good sized bedrooms and a gorgeous contemporary fitted bathroom that has both a bath and a separate shower cubicle. The bedrooms all have the best of the open far reaching outlook. The property comes with gas central heating and upvc double glazing. The rear garden is laid to patio and has a brilliant sunny aspect. There is a garage to the rear which is larger than a single, plenty of space for storage /workshop. The garden and further parking runs up the side of the house with an area of front garden too. There is plenty of off road parking for numerous cars. This really is an exceptional house in a beautiful spot by the park whilst also being close to some great schools.

Need A Mortgage?

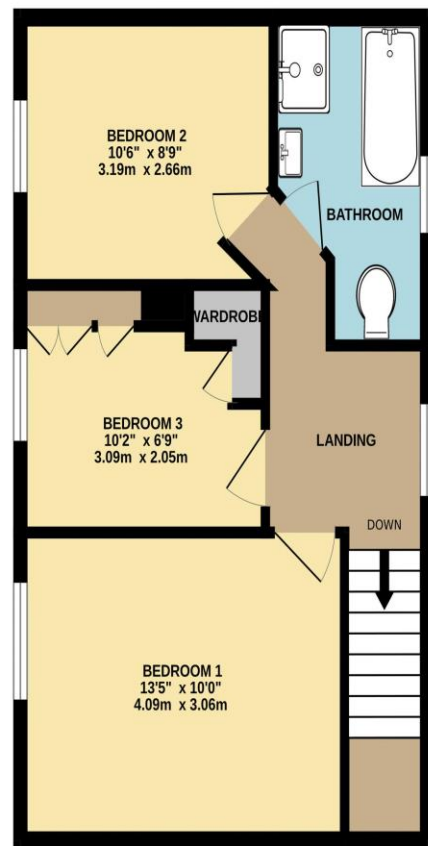
**Don't pay more than you need to for your mortgage advice:
ours is only £195 paid when you move!**

Floor Plans

GROUND FLOOR



1ST FLOOR



Made with Metropix ©2025



Fixed Price Conveyancing

A complete solution from just £600 with No sale – No Fee



We have not tested any apparatus, equipment, fixtures and fittings or services and so cannot verify that they are connected, in working order or fit for the purpose. Neither have we had sight of the legal documents to verify the Freehold or Leasehold status of any property; or sight of any consents, including Planning Permissions, building Regulations and Breaches of Covenants that may be required for alterations to the property. A buyer is advised to obtain verification from their Solicitor and/or Surveyor. Items shown in photographs are NOT included unless specifically mentioned within the Sales Particulars. Any floor plans on these details are not drawn to scale and are intended for guidance only

Falcon Property is an Introducer to Bradleys Financial Management Ltd. They are appointed representatives of Sesame Ltd who are authorised and regulated by the Financial Services Authority. Bradleys do not charge for mortgage advice, however a fee paying option is available. Typical fee is £195. Bradleys Financial Management: 16 Mannamead Road, Mutley, Plymouth, PL4 7AA

Your home may be repossessed if you do not keep up repayments on your mortgage.

