



Falcon

01752 600444

40 Glendower Road

Peverell, Plymouth, PL3 4LA

Guide Price £300,000 - £320,000





In Brief

Mid Terrace Peverell Family Home

Reception Rooms	Living Room & Dining Room Large Spacious Kitchen/Breakfast Room		
Bedrooms	4 Bedrooms		
Heating	Gas Central Heating	Parking	Potential Off Road Parking if Required
Area	1199 Sqft	Council Tax	C
Tenure	Freehold		

Description

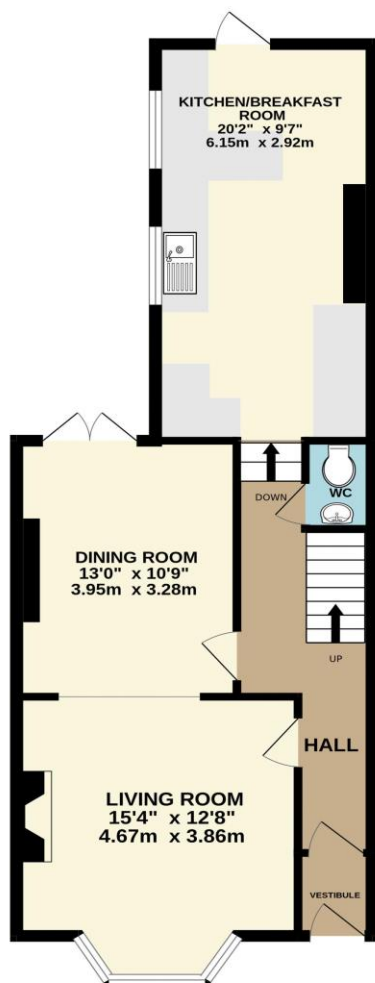
Located in the fantastic residential area of Peverell is this spacious 4-bedroom family home perfectly situated for access to Central Park with its selection of walks and activities including tennis courts, and bowling green while Hyde Park with its popular Primary school and shops is also located nearby. The property offers accommodation comprising of a spacious living room to the front with a large bay window and a feature fireplace, an opening lead through to the dining room. At the end of the hallway is the spacious kitchen/breakfast room which measures over 20ft in length and consists of a range of base units with work surfaces over, plus a breakfast bar area. The kitchen also offers space for appliances. A door from the kitchen leads out to the rear garden. On the first floor there are four bedrooms, consisting of three double bedrooms and an additional single bedroom. Also on the first floor is the main family bathroom which comprises of a WC, wash hand basin and a bath with a mains shower over. Externally the property has a low maintenance garden consisting of a raised area with steps down to a brick paved area, with stone walling to the sides and a roller garage door, allowing access to the rear service lane and off-road parking if required. This is a great family home within this popular postcode area, close to schools and amenities. Call now for more details or to organise a viewing.

Need A Mortgage?

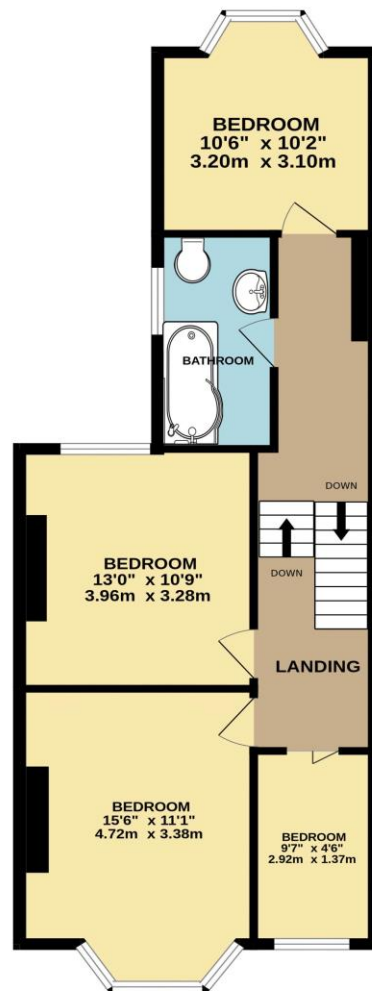
Don't pay more than you need to for your mortgage advice:
ours is only £195 paid when you move!

Floor Plans

GROUND FLOOR
595 sq.ft. (55.3 sq.m.) approx.



1ST FLOOR
603 sq.ft. (56.0 sq.m.) approx.



TOTAL FLOOR AREA : 1199 sq.ft. (111.4 sq.m.) approx.
Made with MetroPix ©2024

1

2

3

4

5

6

7

8

9

10

11

12

13

14

15

16

17

18

19

Fixed Price Conveyancing

A complete solution from just £600 with No sale – No Fee



We have not tested any apparatus, equipment, fixtures and fittings or services and so cannot verify that they are connected, in working order or fit for the purpose. Neither have we had sight of the legal documents to verify the Freehold or Leasehold status of any property; or sight of any consents, including Planning Permissions, building Regulations and Breaches of Covenants that may be required for alterations to the property. A buyer is advised to obtain verification from their Solicitor and/or Surveyor. Items shown in photographs are NOT included unless specifically mentioned within the Sales Particulars. Any floor plans on these details are not drawn to scale and are intended for guidance only

Falcon Property is an Introducer to Bradleys Financial Management Ltd. They are appointed representatives of Sesame Ltd who are authorised and regulated by the Financial Services Authority. Bradleys do not charge for mortgage advice, however a fee paying option is available. Typical fee is £195. Bradleys Financial Management: 16 Mannamead Road, Mutley, Plymouth, PL4 7AA

Your home may be repossessed if you do not keep up repayments on your mortgage.

